



09-01-08

**NEWS FROM THE PLUMBING INSPECTORS  
City of Winston-Salem**

The following information is provided from the Plumbing Inspections Department of the City of Winston-Salem. All newsletters that have been sent out can be accessed online @ [www.cityofws.org/Home/Departments/Inspections](http://www.cityofws.org/Home/Departments/Inspections) Look for Newsletters, Plumbing Monthly.

**INSPECTORS AREAS CHANGED**

The areas have changed for some of the Plumbing Inspectors. Please see our home page @ [www.cityofws.org](http://www.cityofws.org) . Or go to [www.cityofws.org/Home/Departments/Inspections/Articles/FormsAndFees](http://www.cityofws.org/Home/Departments/Inspections/Articles/FormsAndFees) . Look for Inspector Territory Maps.

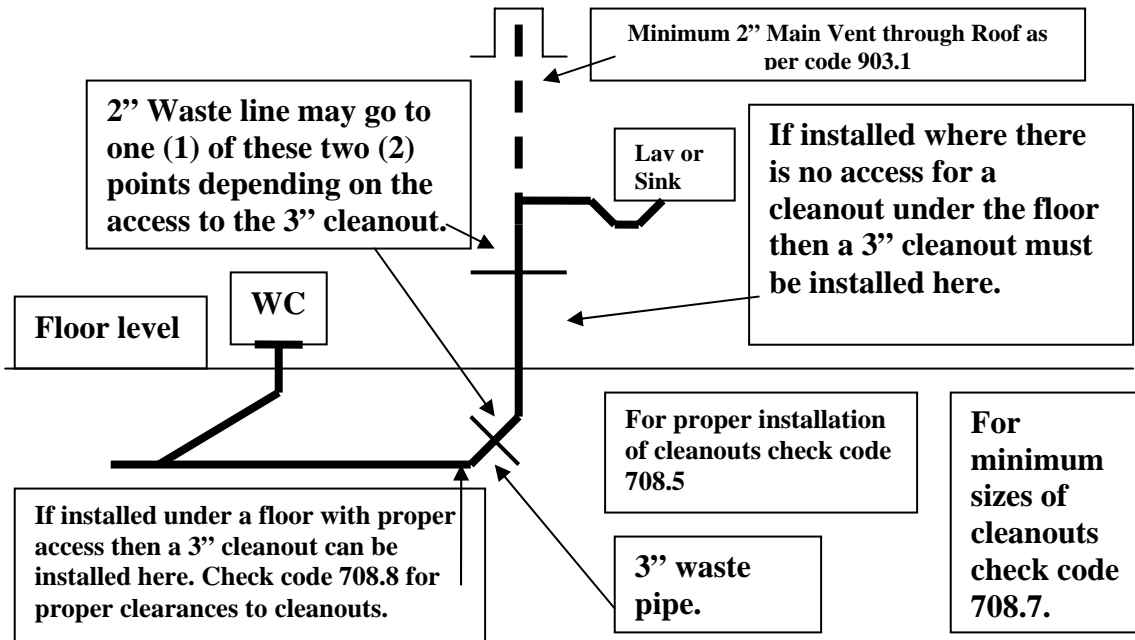
**Questions from contractors:**

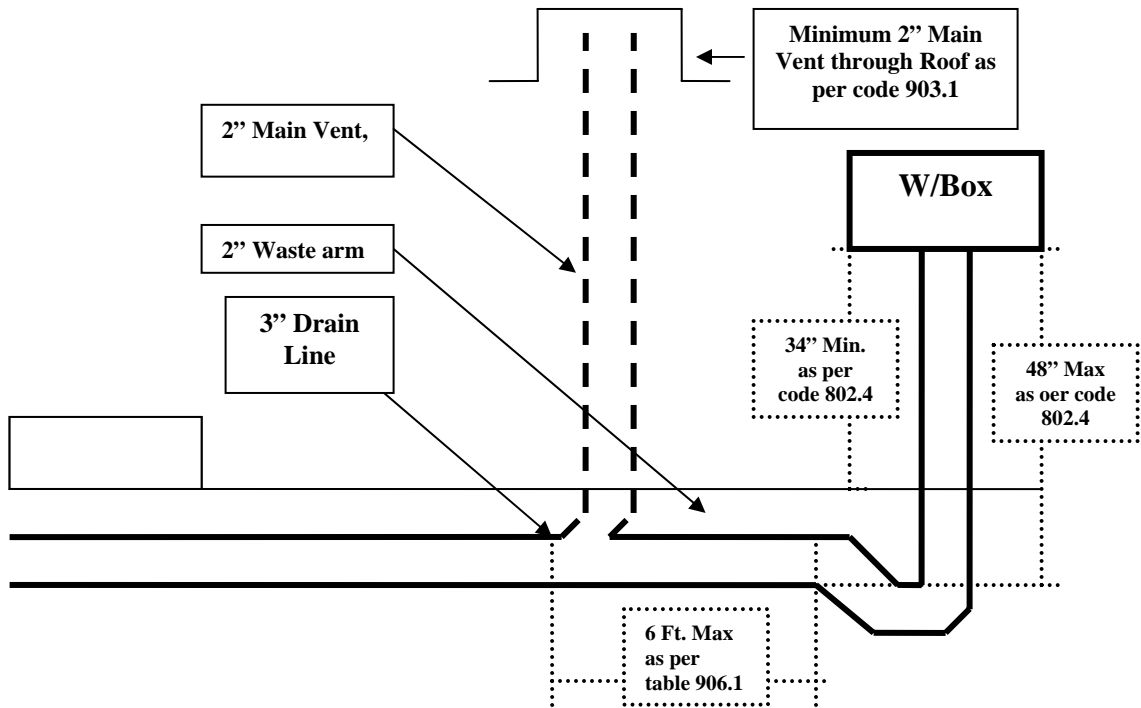
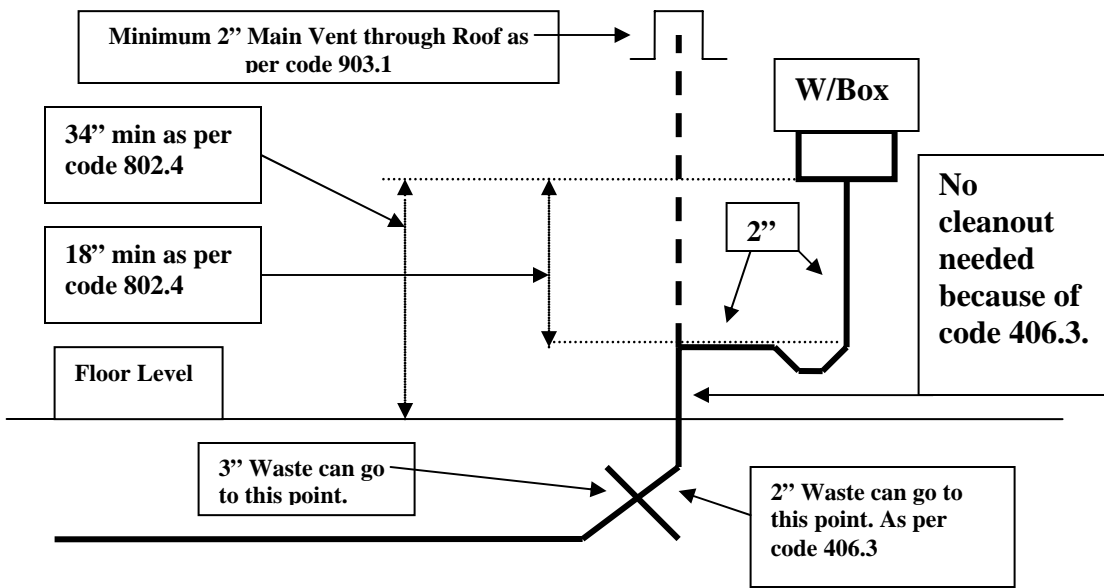
When a Lav, Sink or W/Box is used, what is the proper way for the main vent of the building to tie into the building drain in one- and two-family dwellings?

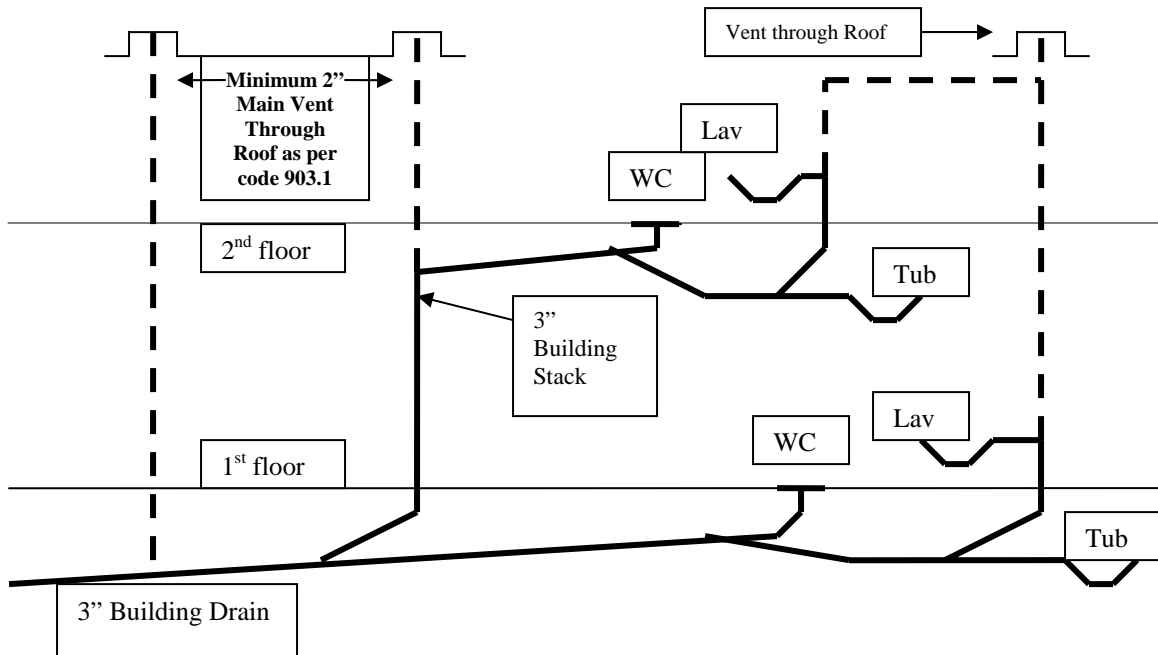
**Answer:**

The last part of the paragraph in the 2006 NC Plumbing Code 903.1.1 states: For townhouses and one- and two-family dwellings, the main vent shall connect to the building drain, building stack or branch thereof not less than 3 inches (76 mm) in size.

Here are some different examples of the Main Vents







There are many scenarios that can be installed in order to satisfy our current NC Plumbing Code. These are some of the most common that we are seeing.

**Items you wish to discuss please e-mail me and we will respond to your questions and also we will include what we can in our monthly letter. Thank you for all your comments and concerns.**

Please send any comments to [Jamesr@cityofws.org](mailto:Jamesr@cityofws.org) we would like to hear from you.

Thanks

James Rhodes  
 Senior Plumbing Inspector  
 Office # 336-727-2379  
 Cell # 336-462-7147