

Office Info

For permits, requests for inspections, information on status of permits or just looking for newsletters that have already been published go to www.inspectnet.org.

Looking for Inspector Territory Maps? Go to www.cityofws.org/Home/Departments/Inspections/Articles/FormsAndFees.

2009 NC Plumbing Code:

It has arrived. All Building Permits bought this month will be using the 2009 Plumbing Code.

Looking for a copy of the 2009 NC Plumbing Code go to www.iccsafe.org. Look for **Code Book Sales**.

New Accessibility Code for 2009

Keep in mind that all information that I have been able to gather does point to a New Accessibility Code for 2009.

The house and the senate had Bills introduced to deter the adoption of Chapter 11 Accessibility and ANSI A117.1 of the 2009 code. These failed to make "cross over" hence Chapter 11 and ANSI standard A117.1 will become our new Accessibility Code when this legislative session is over. The way the building code council sent the new standard to the legislature was for it to become law on the last day of the session.

We will no longer have the NC Accessibility Code. This

would also mean that the Rehab Code will have to be rewritten to match up with Chapter 11 and the ANSI Standard.

I am putting this information out here in the hopes that this change doesn't catch you off guard.

There are many changes that will affect you as the NC Licensed Plumbing Contractor.

Accessible bathroom sizes have enlarged, Water Closet, Drinking Fountain, Lavatories, Showers/Bath tubs....ect. All to some degree have different Clearances/Maximum/Minimum measurements.

Check your copy of the 2009 NC Building Code.

Our Plan review is asking that all plans submitted after June 30, 2009 to be in compliance with the 2009 Building Code Chapter 11 and the ANSI standard A117.1. The ANSI standard & commentary can be bought at www.ICCsafef.org.

For new information about the Accessibility Code from DOI go to www.ncdoi.com/OSFM/Engineering/engineering_newsletter.asp Click on May 19,2009 newsletter



You can't direct the wind, but you can adjust your sails.

Questions from contractors:

Question: Will the requirements for a Accessible Water Closet rough change any for this 2009 code?

Answer: Yes, The most common rough that we see in Forsyth County will change to some degree.

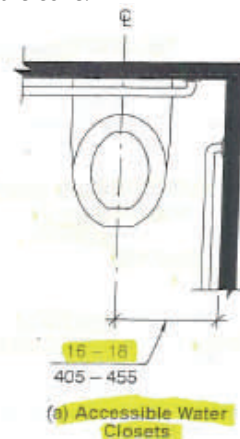
ICC/ANSI A117.1 604.2

Location. The water closet shall be located with a wall

or partition to the rear and to one side. The centerline of the water closet shall be 16 inches minimum to 18 inches maximum from the side wall or partition....

This would mean that if the rough that is being inspected is closer than 16 inches or further that 18 inches from the side wall or partition it will be in violation

of the code.



If you wish to have your questions included in our monthly newsletter.

Please send to Jamesr@cityofws.org. Thank you, James Rhodes, Senior Plumbing Inspector, Winston-Salem/Forsyth County Inspection

100 E. First St., Suite 328 Winston-Salem, NC 27101 Office: 336-727-2379 Fax: 336-727-2792 E-mail: Jamesr@cityofws.org