

WINSTON-SALEM POLICE DEPARTMENT

GENERAL ORDER ADDENDUM

NUMBER: 09-09

DATE: October 28, 2009

SUBJECT:

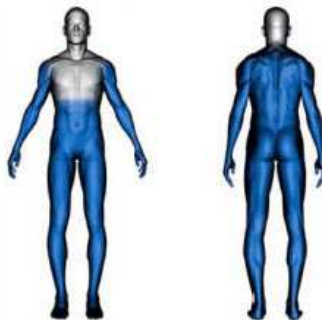
General Order 1.29

Electronic Control Device Use

DISTRIBUTION:

Electronic: Police Department Users

Effective immediately the preferred target area for the TASER[®] X26 will be changed from center mass and legs to **LOWER center mass** and legs. The preferred target from the rear is still center mass. Extra caution should be taken to avoid firing the probes directly at a subject's chest. This change comes at the recommendation of TASER International. Below is a picture of the new preferred target areas.



Preferred Target Areas in Blue

According to TASER International, "this change has less to do with safety and more to do with effective risk management for law enforcement agencies. It also lessens the risk of shot placement into areas that are undesirable such as the head, face, neck and female breast. It is important to note that the preferred target zone does not mean that other areas are prohibited. However, when a situation allows for sufficient time to intentionally aim the TASER[®], it is best practice to try, when possible, to aim for the preferred target areas shown in blue in the above picture."

Dr. Bozeman, our medical reviewer, states that probes striking the chest still have an extraordinarily low risk of adverse events in relation to other force options.

Therefore, General Order 1.29, "Electronic Control Device Use" has been amended as follows:

Section V,

- E. Officers will target **the lower** center mass or the legs of a subject's body when deploying an Electronic Control Device. Extra caution should be used to avoid firing probes at a subject's head, neck and genital areas.

This change has been made to General Order 1.29 in the Shareall / Policy and Procedure Folder, and the ECD Training Lesson Plan.

Scott A. Cunningham
Scott A. Cunningham
Chief of Police