

Project Details:

City/County Utilities Department is constructing the Harper Road Lift Station to provide wastewater service to the Blanket Bottom Creek area. The project will include a capacity expansion to the existing Clemmons No. 1 Lift station (located along Peace Haven Road) and approximately 6,000 linear feet of pressure pipeline between Clemmons No. 1 Lift station and the new Harper Road Lift Station.

The Harper Road Lift Station will be located along Harper Road near the crossing of Blanket Bottom Creek. There will also be about 10,000 linear feet of pressure pipeline between Harper Road Lift Station and its connection point to the Utility's wastewater collection system near the end of Oakton Drive.

Project Timeline:

September 2014	Construction Begins
Late Summer 2015	Pipeline Construction Complete
Fall 2015	Harper Road Lift Station Construction Complete
Winter 2015	Clemmons No. 1 Lift Station Construction Complete



Clemmons No. 1 Lift Station

What to Expect During Construction:

Work will be performed between 7:00 am and 6:00 pm, Monday through Friday.

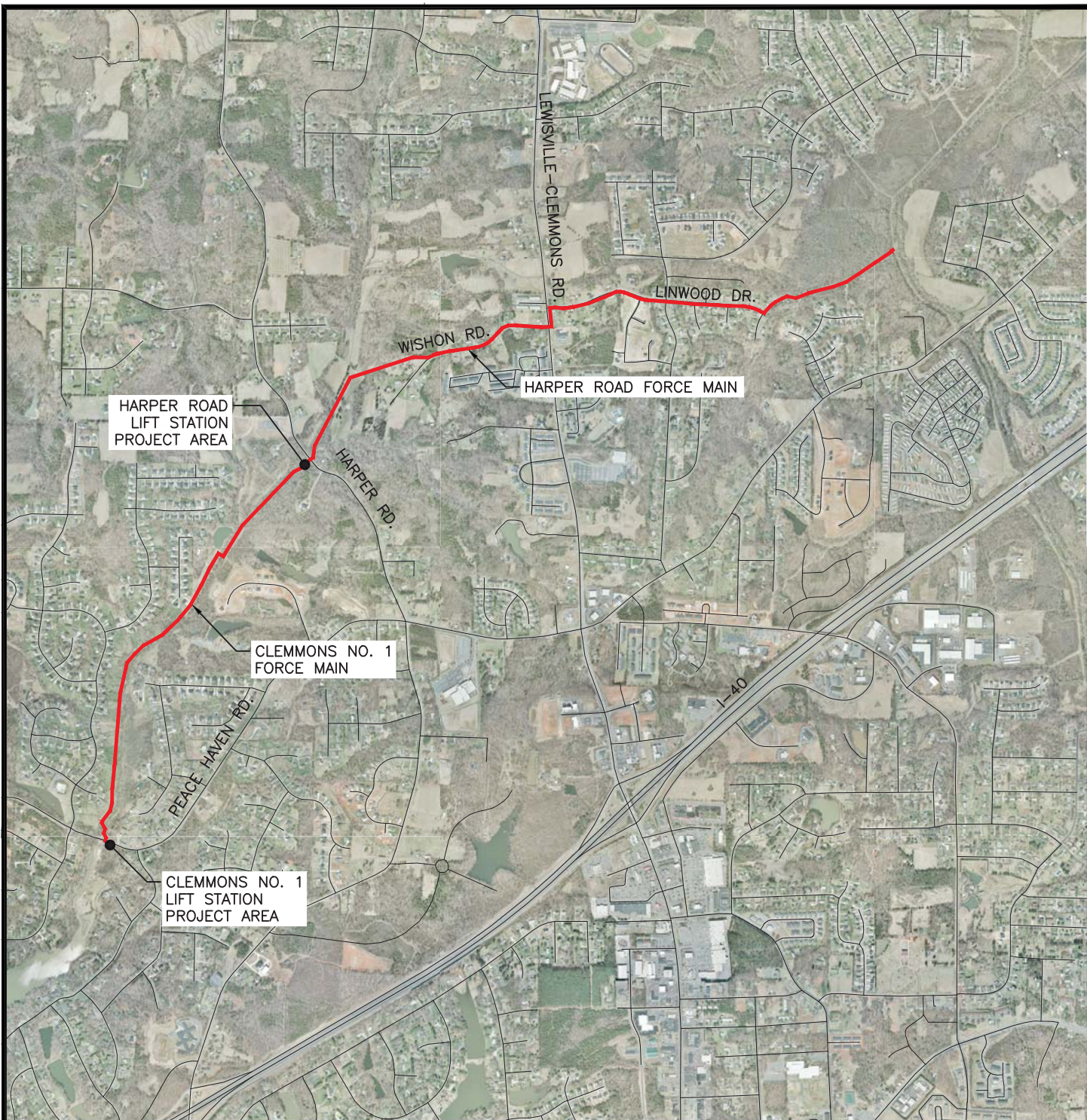
There is the potential for noise in areas around the active construction work.

No service disruptions or traffic impacts are expected.

There will be some clearing required in wooded areas which may be done ahead of the pipeline construction. Clearing limits have been minimized as much as possible.

Contact Information:

Questions and concerns can be directed to City/County Utilities Department Project Manager, Mike Stover, Civil Engineer, City of Winston-Salem Utilities Administration, 101 North Main Street, Suite 357, Winston-Salem, NC 27101 Phone: (336) 747-6840 Email: michaelws@cityofws.org.



February 4, 2014



SCALE: 1"=2000'

Project Area Map
 Harper Road Lift Station/
 Clemmons No. 1 Expansion
 City/County Utilities



HIGHFILL
 INFRASTRUCTURE
 ENGINEERING, P.C.