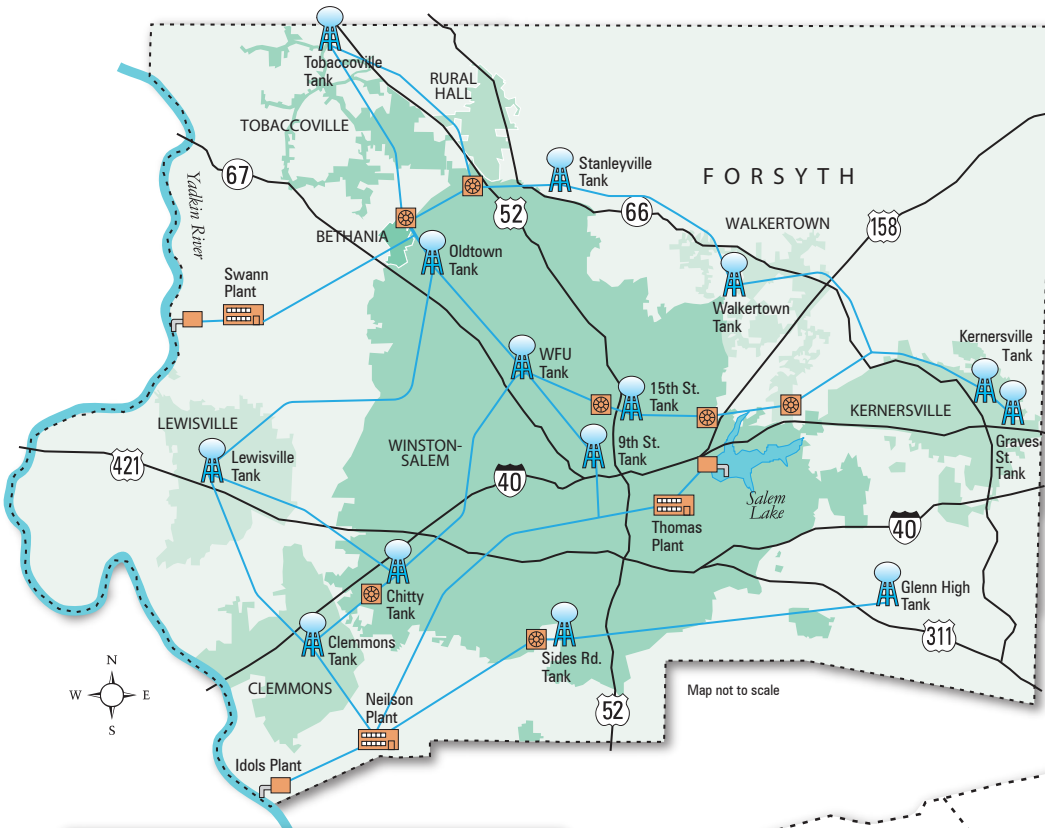


OUR WATER SYSTEM

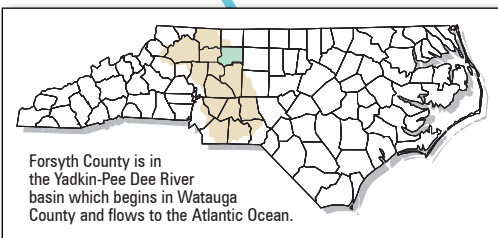


The Winston-Salem/Forsyth County Utilities water system includes three water treatment plants that can process up to 91 million gallons a day. The water distribution system includes 14 water tanks, seven pumping stations and 2,300 miles of water lines. WSFC Utilities serves more than 370,000 residential, business and industrial customers with water that meets or surpasses all state and federal drinking water standards.

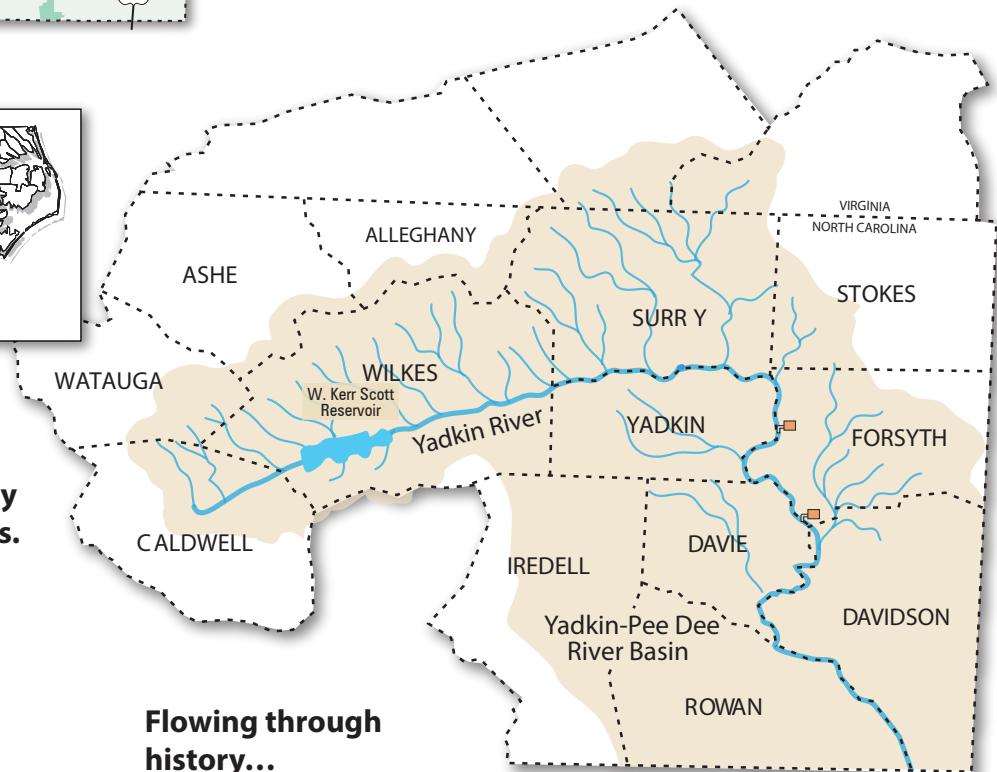
See annual Water Quality Reports at wsfcutilities.org



Quench Your Thirst!
Our water is safe and satisfying, so skip the bottle and save big \$\$\$!



Forsyth County is in the Yadkin-Pee Dee River basin which begins in Watauga County and flows to the Atlantic Ocean.



The Yadkin River is the primary water source for WSFC Utilities.

NORMAL FLOW: 2,500 cubic feet per second (3,875 MGD)

HIGHEST FLOW: 91,000 cubic feet per second (1940 flood)

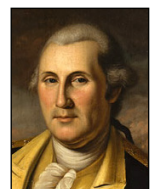
LOWEST FLOW: 221 cubic feet per second (2002 drought)

In case of drought or other emergency, WSFC Utilities has rights to 11 billion gallons of water stored in the W. Kerr Scott Reservoir on the Yadkin River at Wilkesboro, NC.

Flowing through history...

Did you know?

In 1774, the Moravians of Salem began work on one of the nation's first water systems. Water was delivered through bored-out logs joined end-to-end, a design praised by President Washington during his 1791 visit.



HOW DO WATER TREATMENT PLANTS WORK?

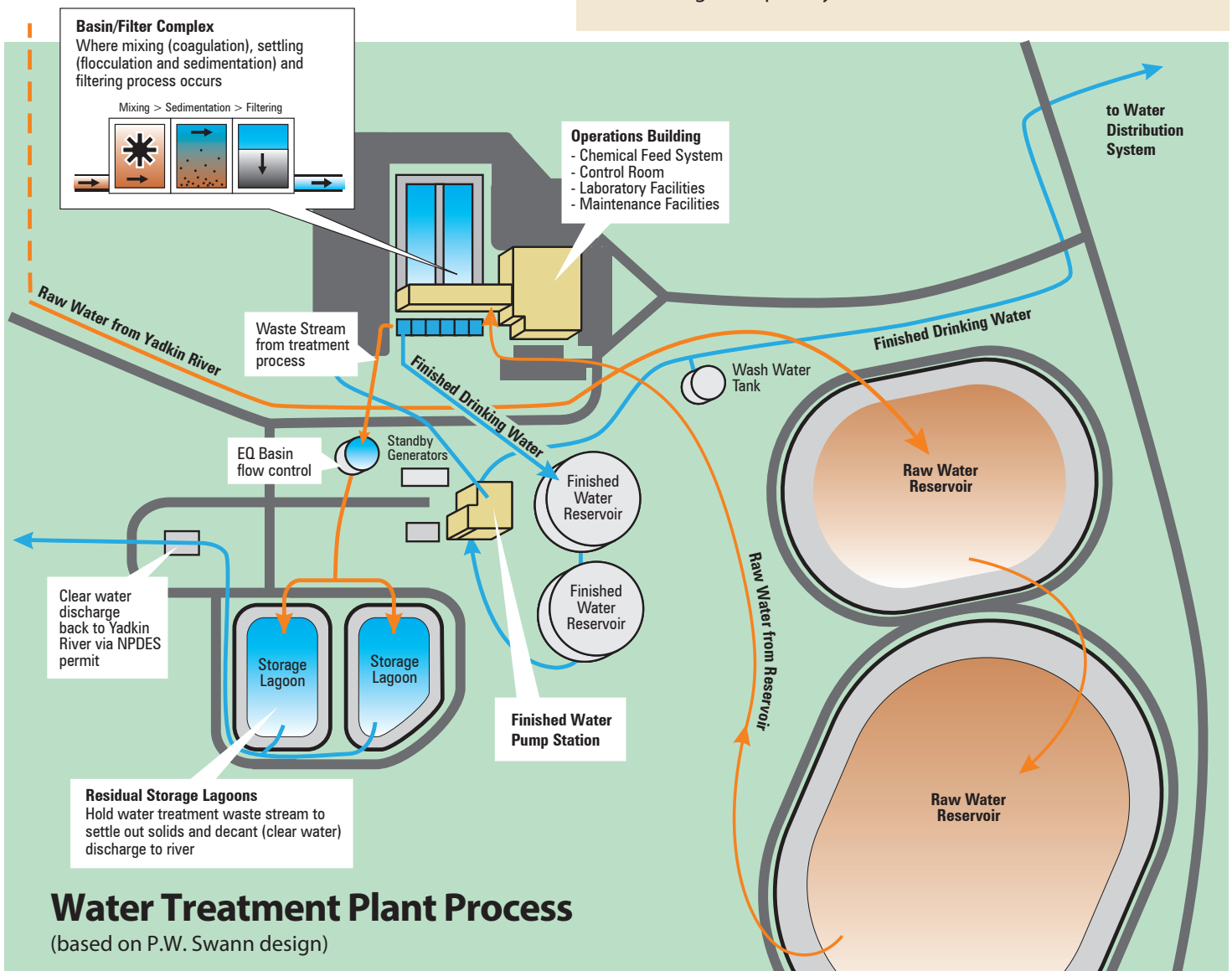
Turning River and Lake Water into Drinking Water

Our three treatment plants are built to turn water from the Yadkin River and Salem Lake into drinking water. The treatment process takes about 16 hours from the time the water is drawn from a raw water reservoir until it is pumped into the water distribution system. The raw water reservoirs hold up to ten days worth of water which serves as off-river storage as needed for changing river conditions.

Water Treatment Plants

	Max. Capacity	Raw Water Source	Opened
R.W. NELSON	48 MGD*	Yadkin River	1964
P.W. SWANN	25 MGD	Yadkin River	2004
R.A. THOMAS	18 MGD	Yadkin River and Salem Lake	2011

* million gallons per day



Worried about lead in your water?

To minimize the potential for lead exposure in public and private plumbing, WSFC Utilities adds zinc orthophosphate during the water treatment process to form a protective coating on the inside of pipes. **When your water has been sitting for several hours, flush your tap for one to two minutes before using water for drinking or cooking.** Learn more at epa.gov/safewater. Concerned about the pipes on your property? Call City Link 311 to request a water test.