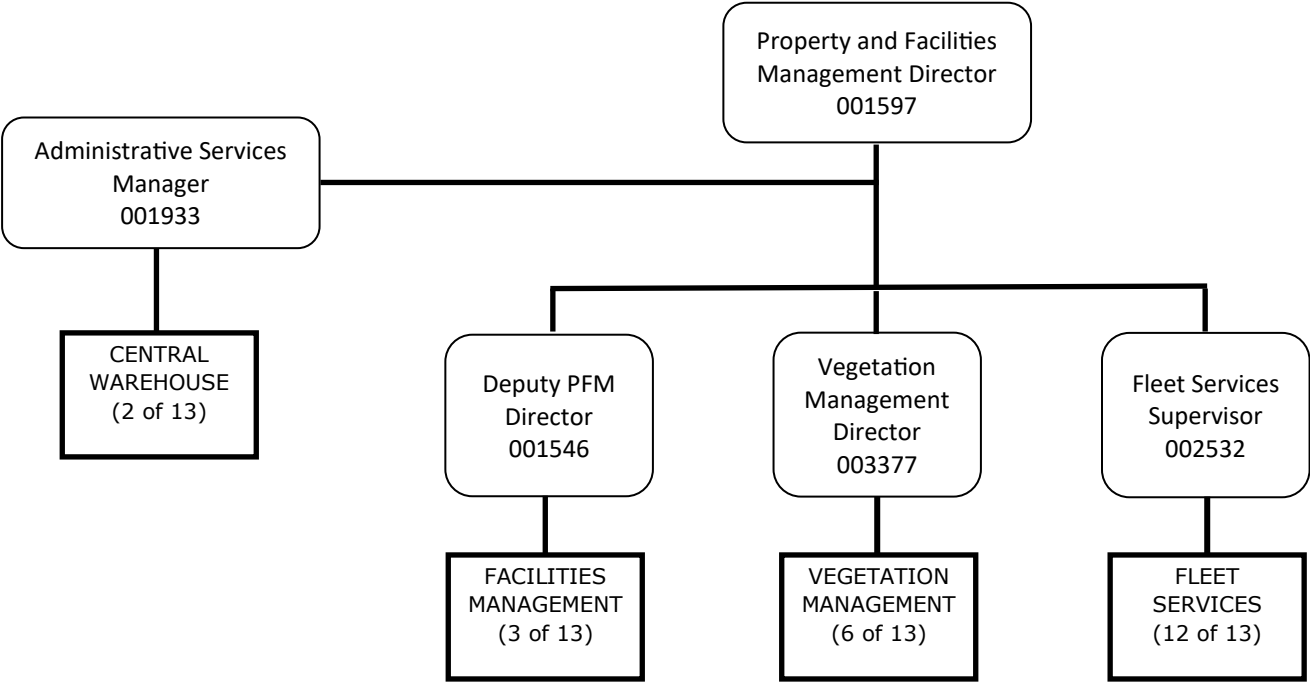
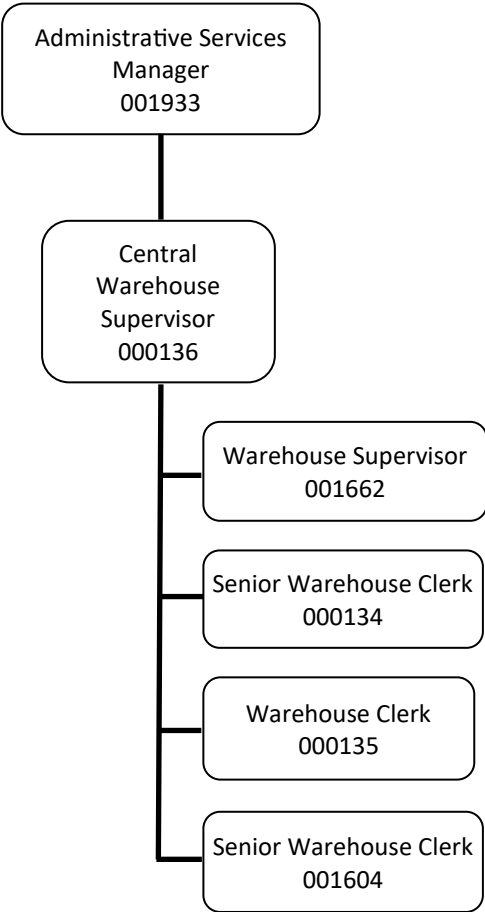


PROPERTY AND FACILITIES MANAGEMENT (1 OF 13) - ADMINISTRATION

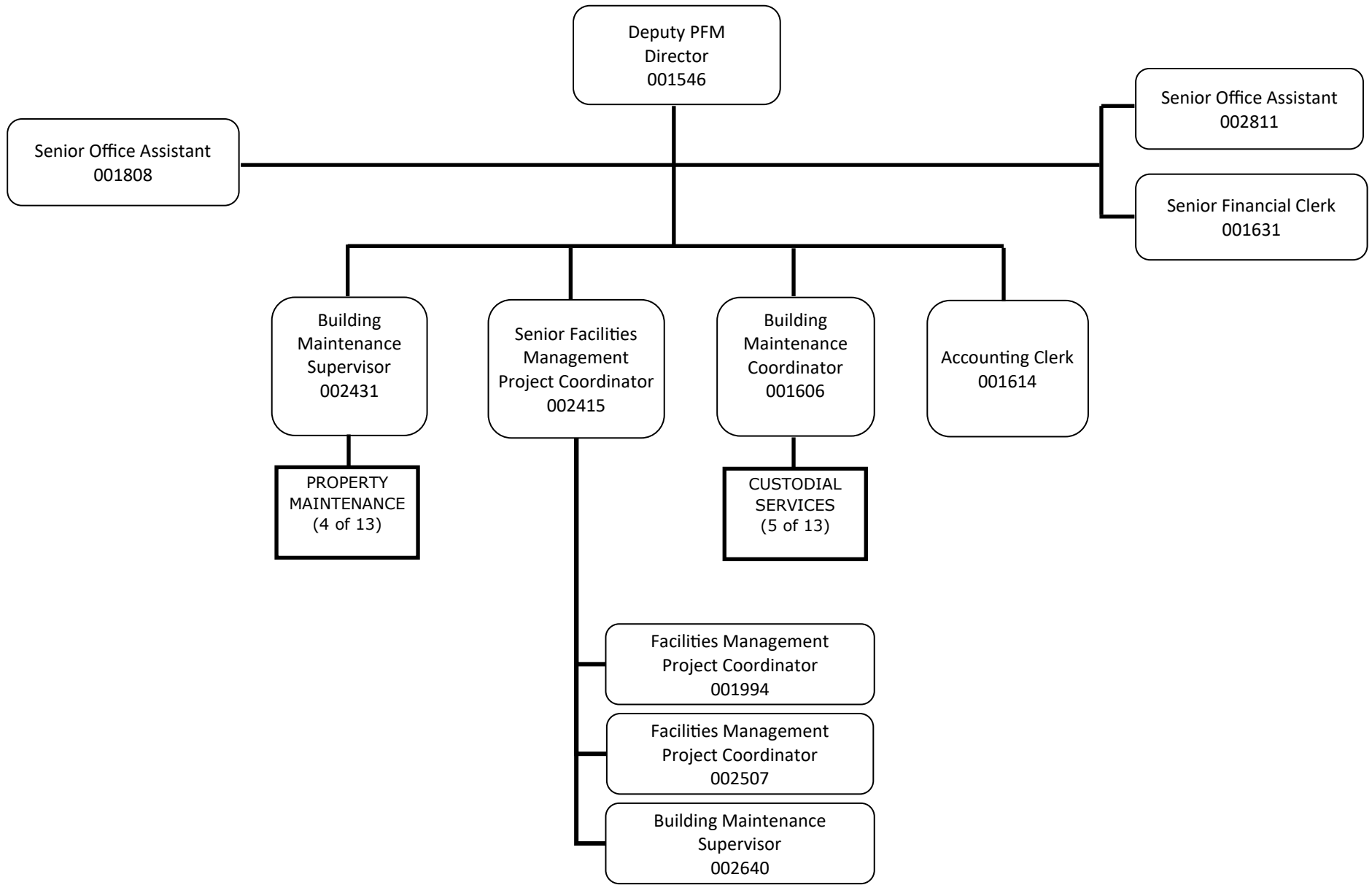


KEY
(PT) Defines the position as Part Time.

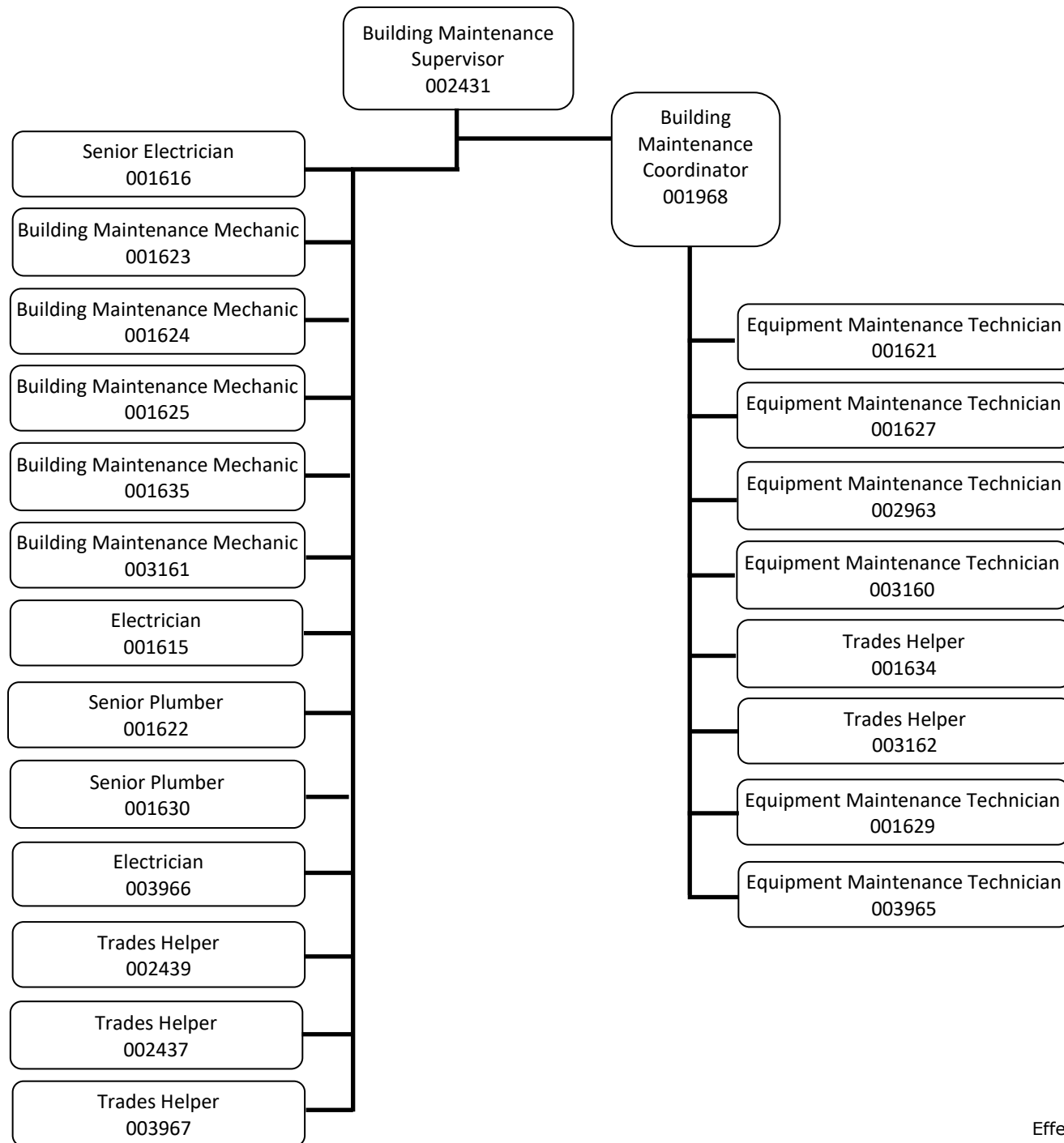
PROPERTY AND FACILITIES MANAGEMENT (2 OF 13) - CENTRAL WAREHOUSE



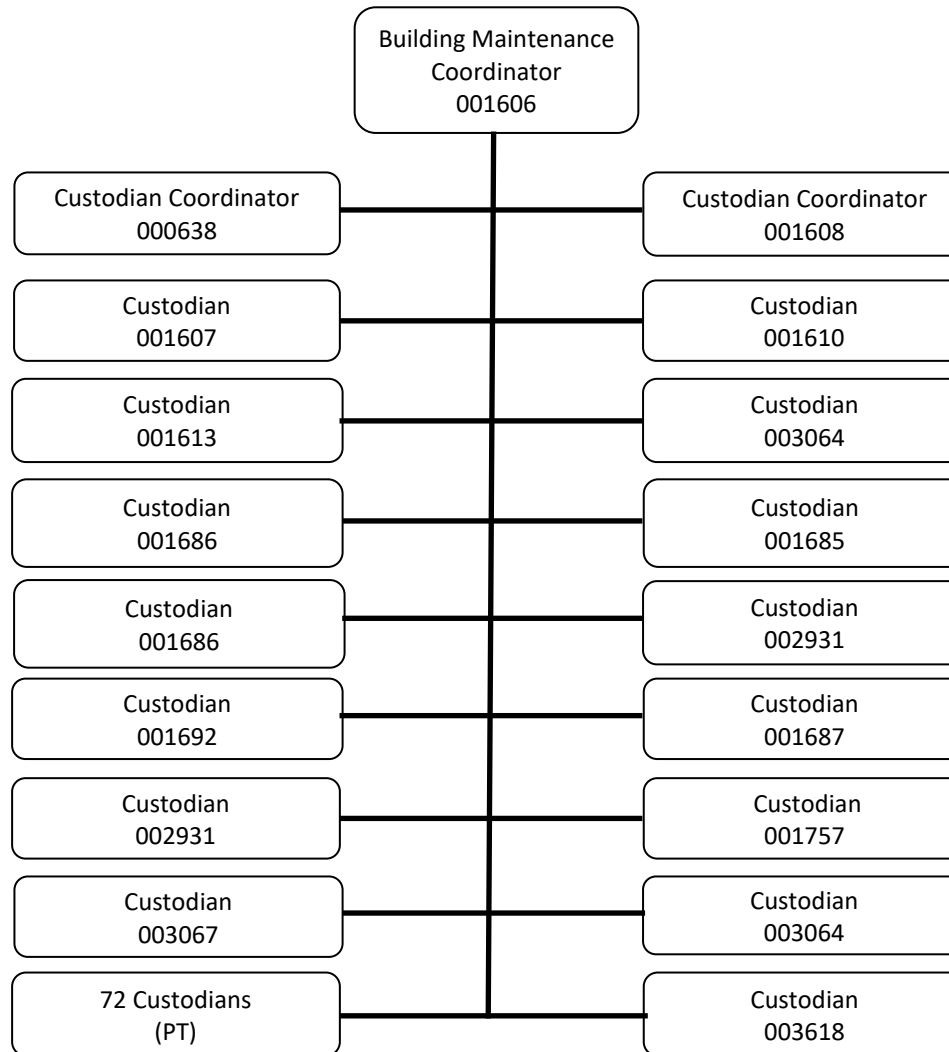
PROPERTY AND FACILITIES MANAGEMENT (3 OF 13) - FACILITIES MANAGEMENT



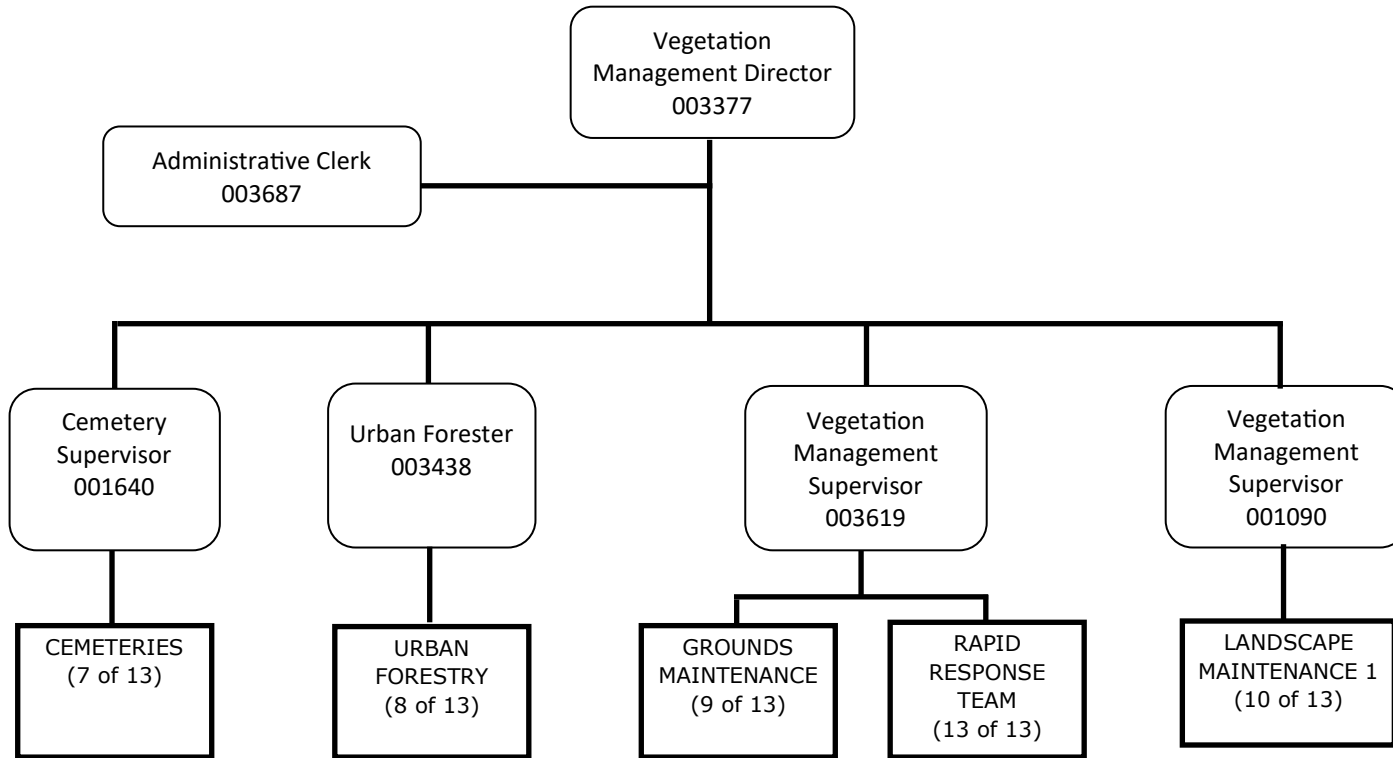
PROPERTY AND FACILITIES MANAGEMENT (4 OF 13) - PROPERTY MAINTENANCE



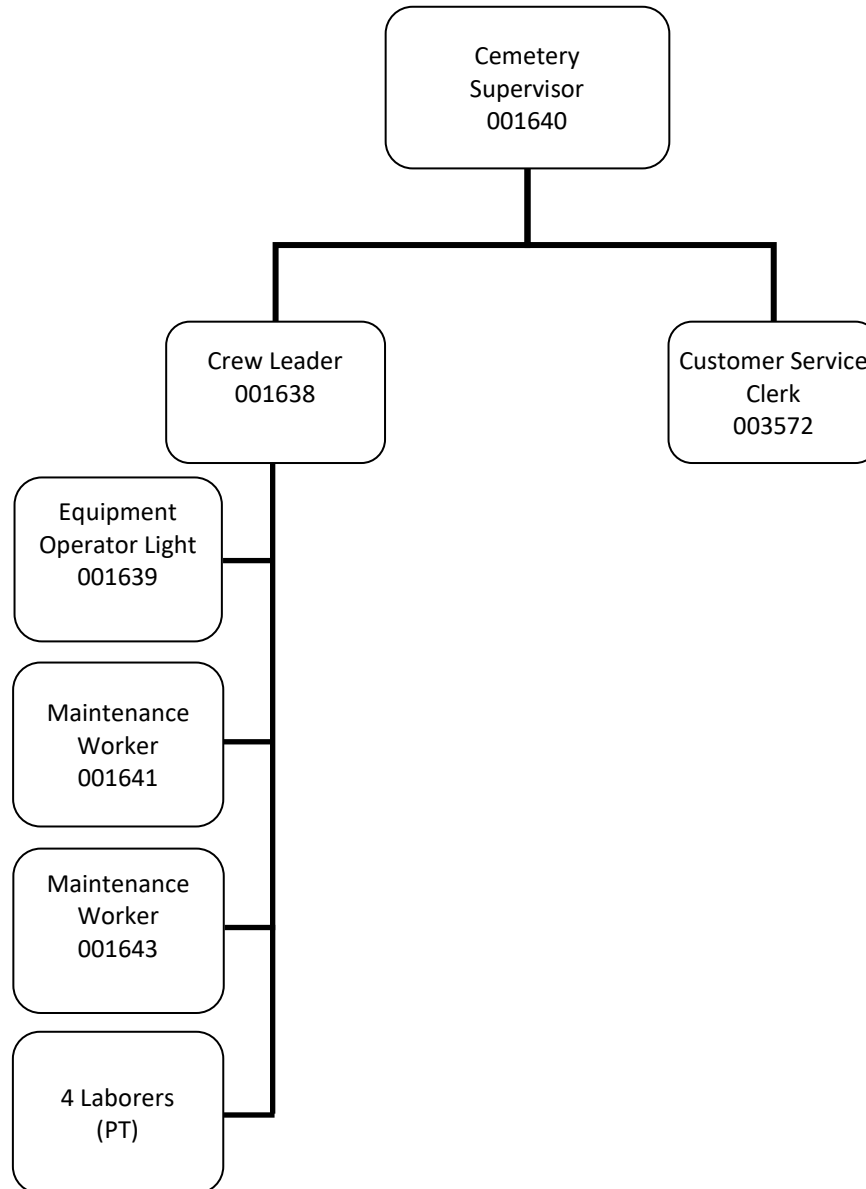
PROPERTY AND FACILITIES MANAGEMENT (5 OF 13) - CUSTODIAL SERVICES



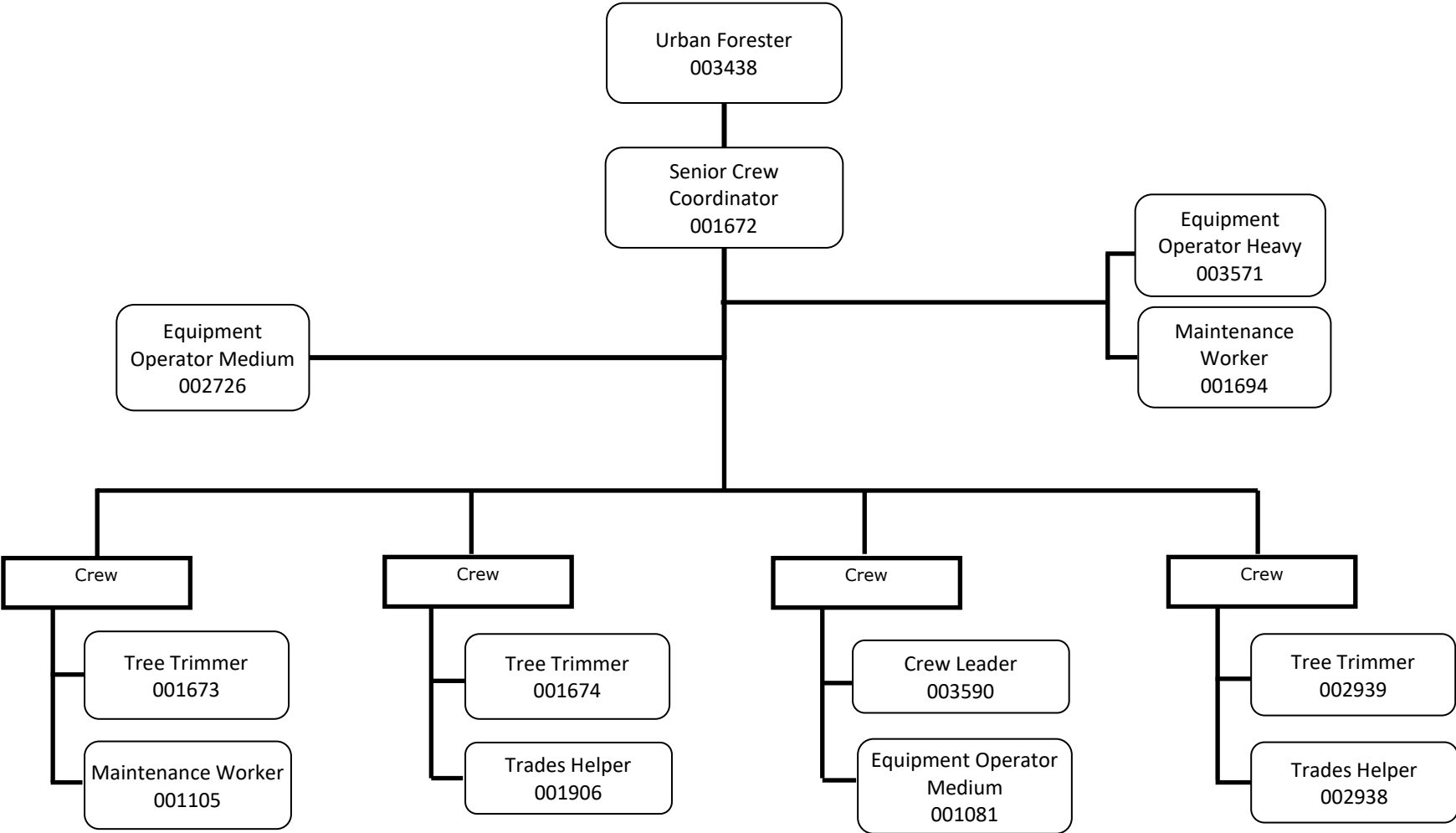
PROPERTY AND FACILITIES MANAGEMENT (6 OF 13) - VEGETATION MANAGEMENT



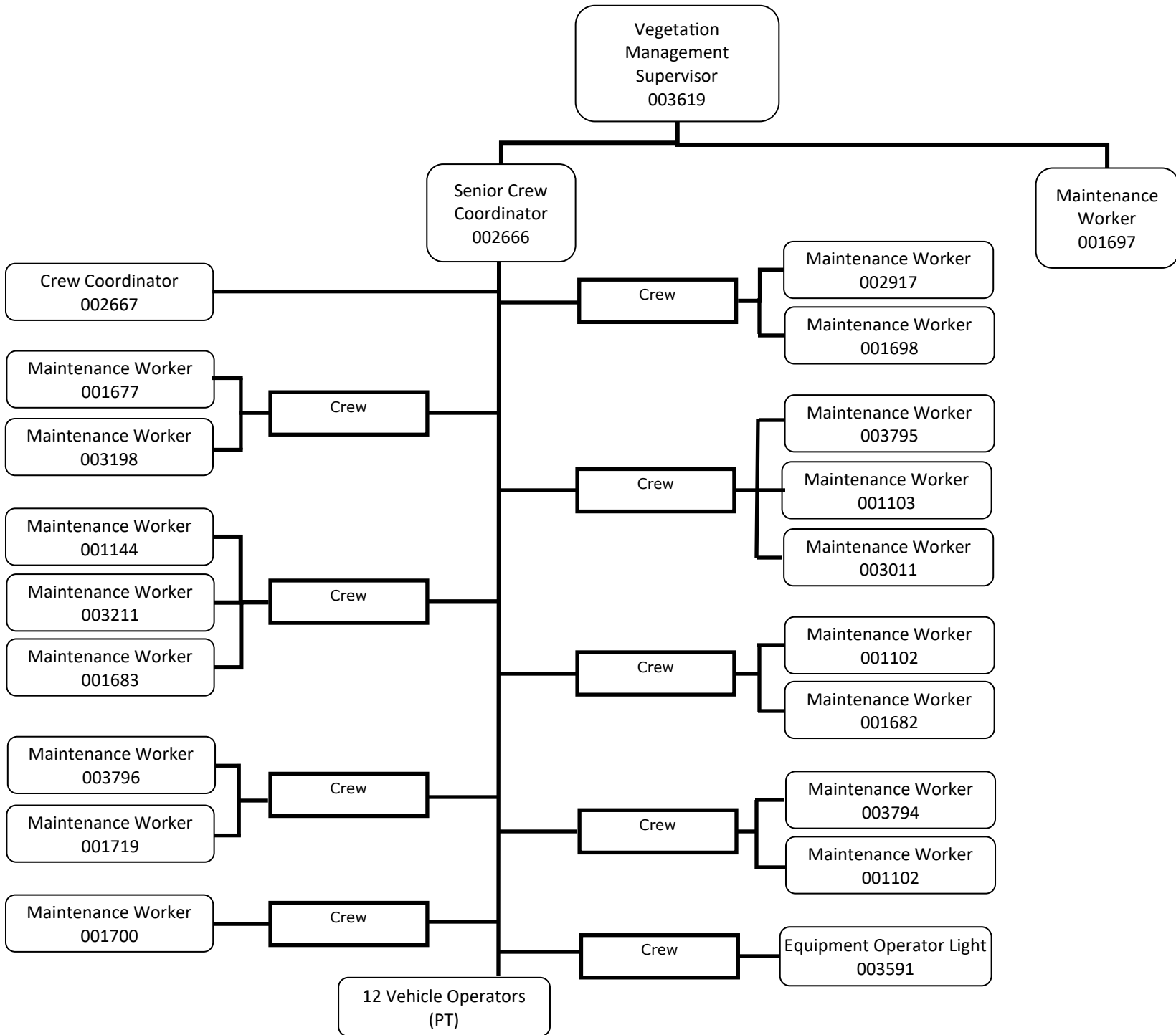
PROPERTY AND FACILITIES MANAGEMENT (7 OF 13) - CEMETERIES



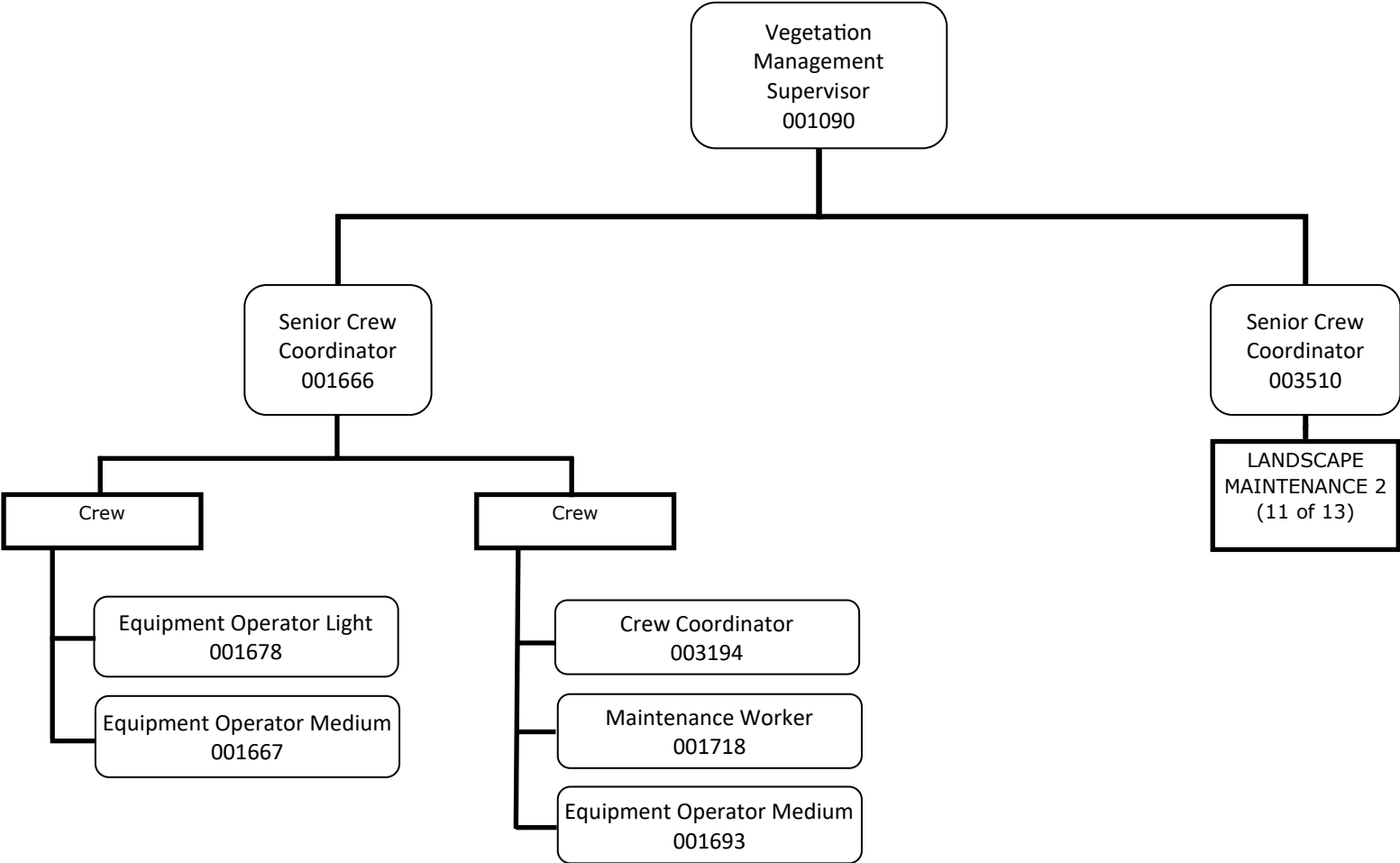
PROPERTY AND FACILITIES MANAGEMENT (8 OF 13) - URBAN FORESTRY



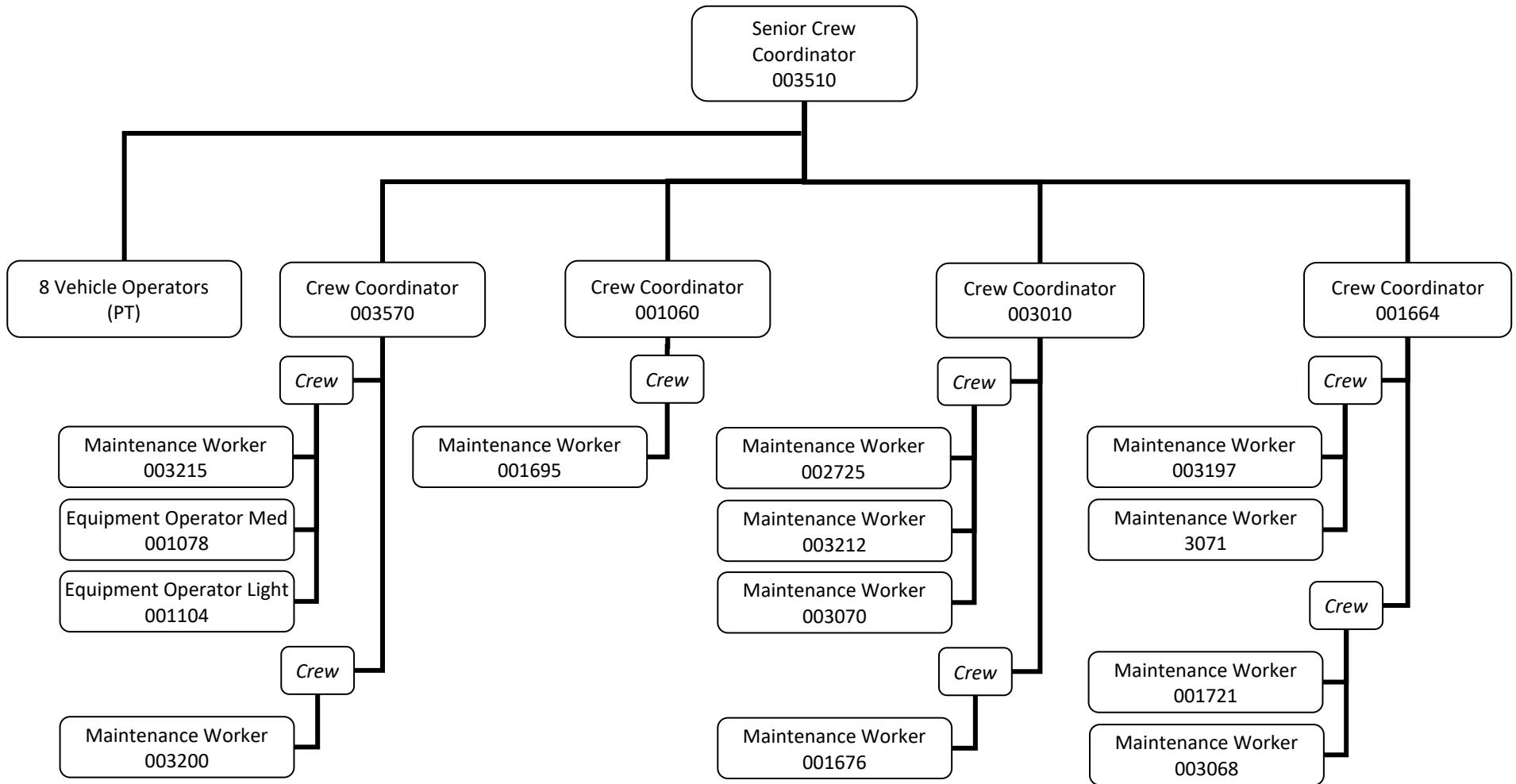
PROPERTY AND FACILITIES MANAGEMENT (9 OF 13) - GROUNDS MAINTENANCE



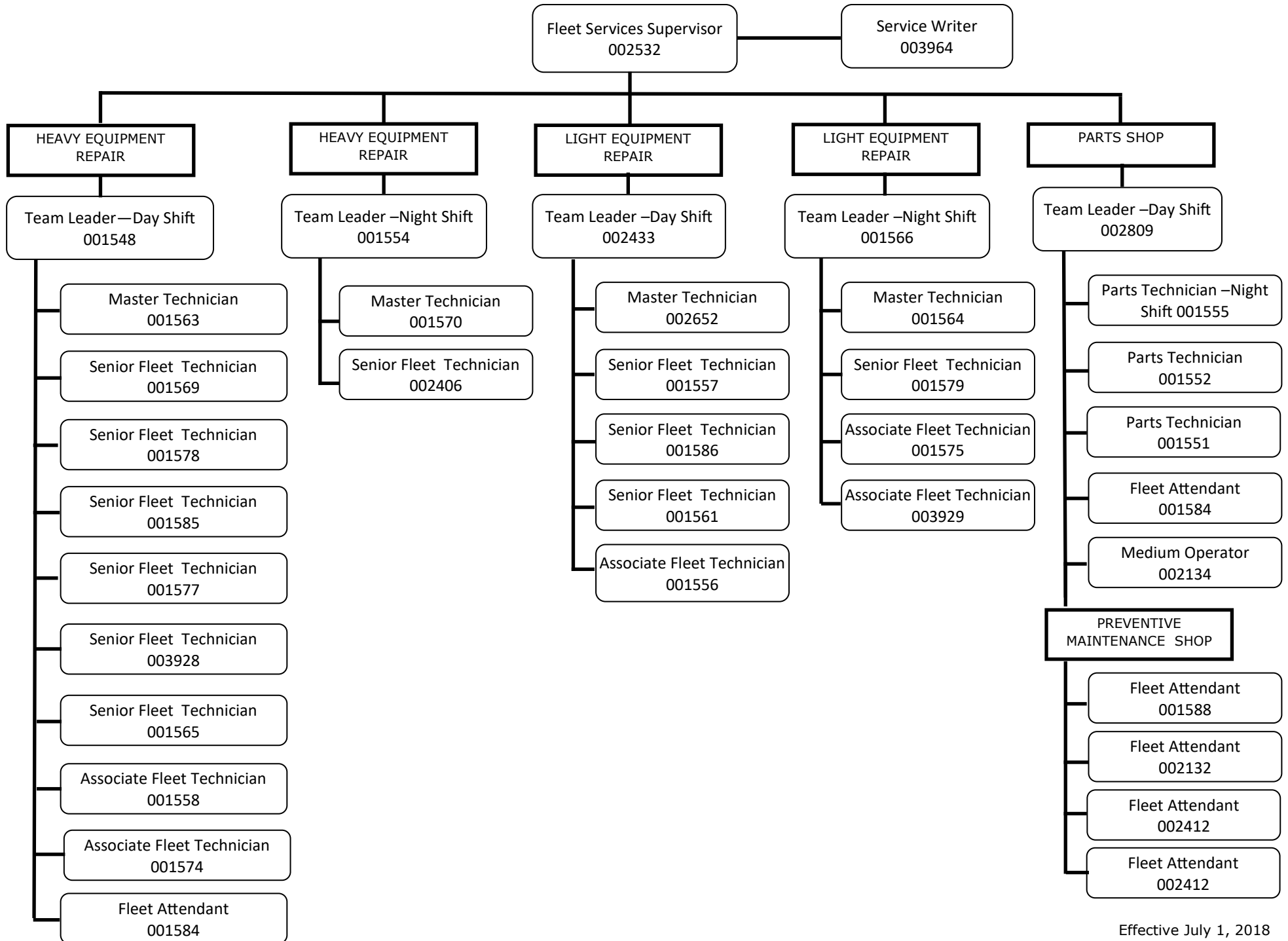
PROPERTY AND FACILITIES MANAGEMENT (10 OF 13) - LANDSCAPE MAINTENANCE 1



PROPERTY AND FACILITIES MANAGEMENT (11 OF 13) - LANDSCAPE MAINTENANCE 2



PROPERTY AND FACILITIES MANAGEMENT (12 OF 13) - FLEET SERVICES



PROPERTY AND FACILITIES MANAGEMENT (13 OF 13) - RAPID RESPONSE TEAM

