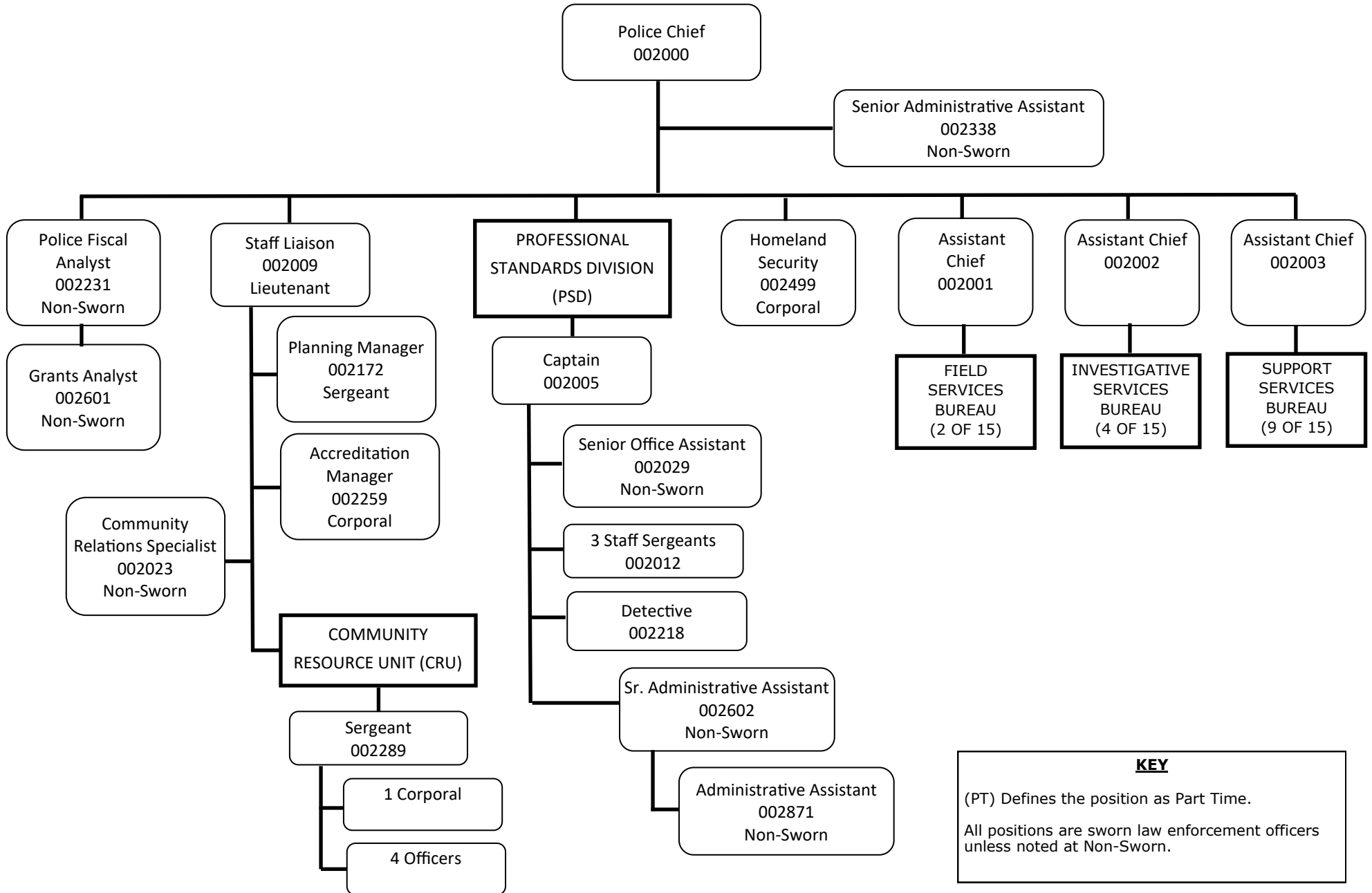
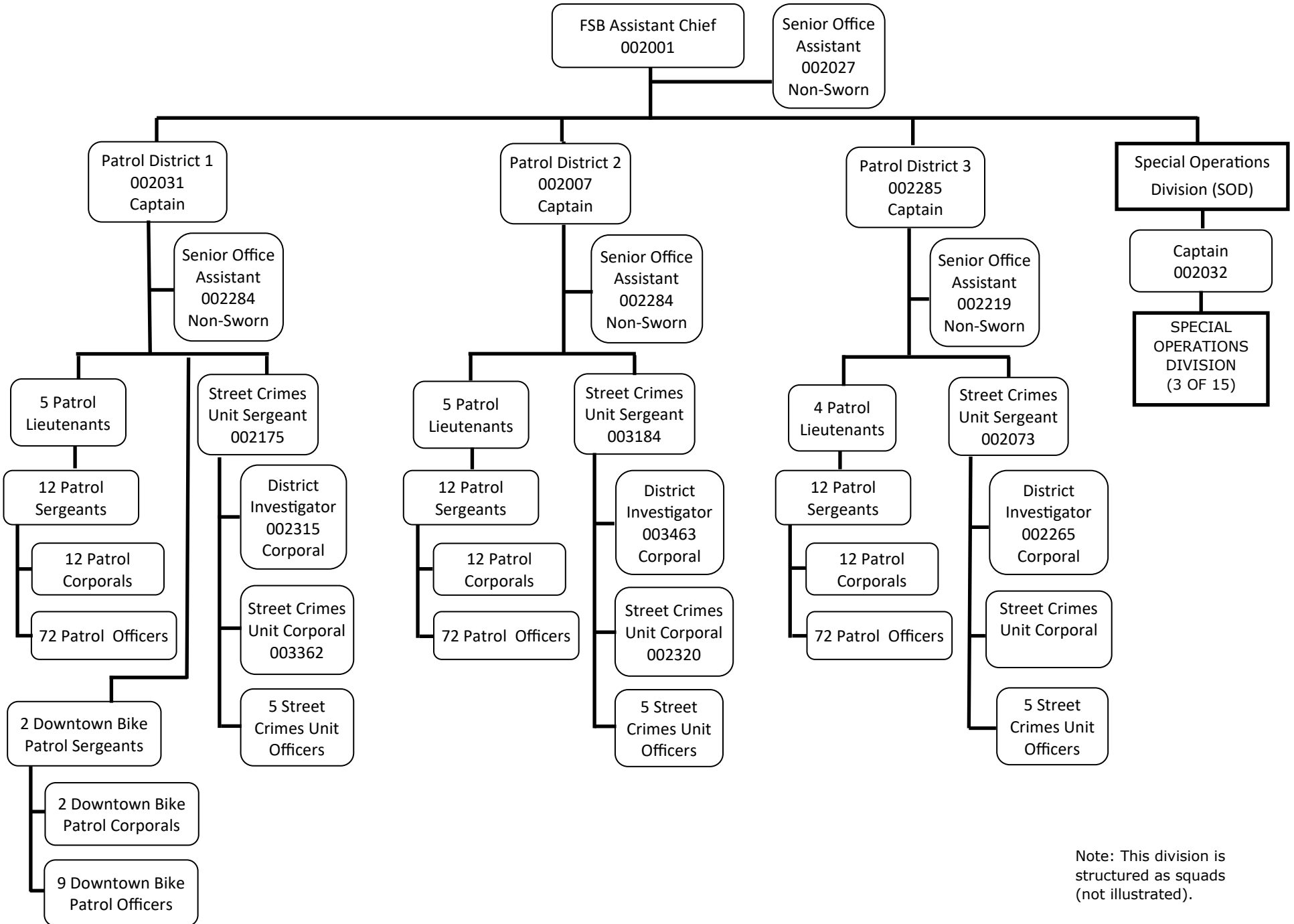


POLICE (1 of 15) ADMINISTRATION

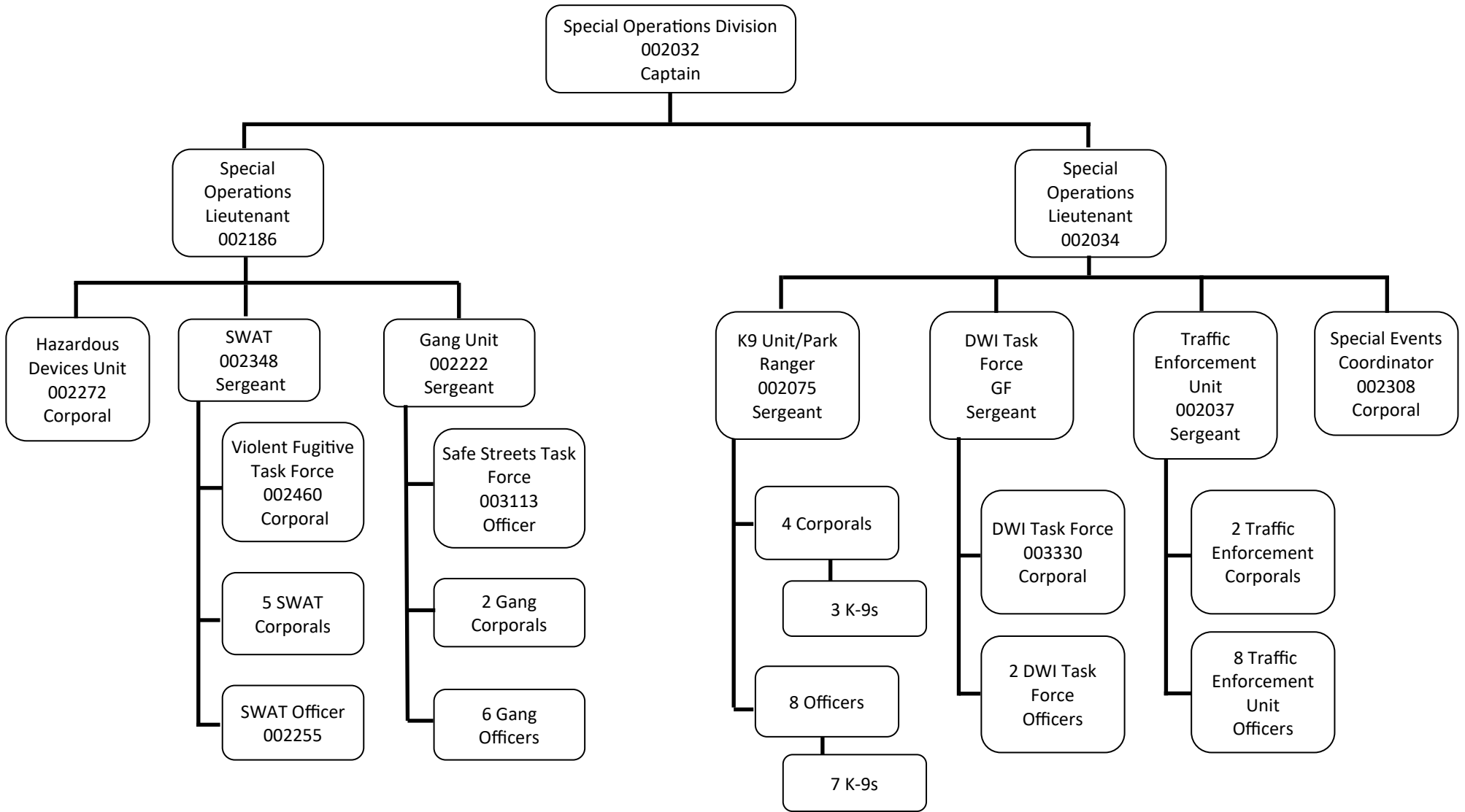


POLICE (2 of 15) - FIELD SERVICES BUREAU (FSB) -1

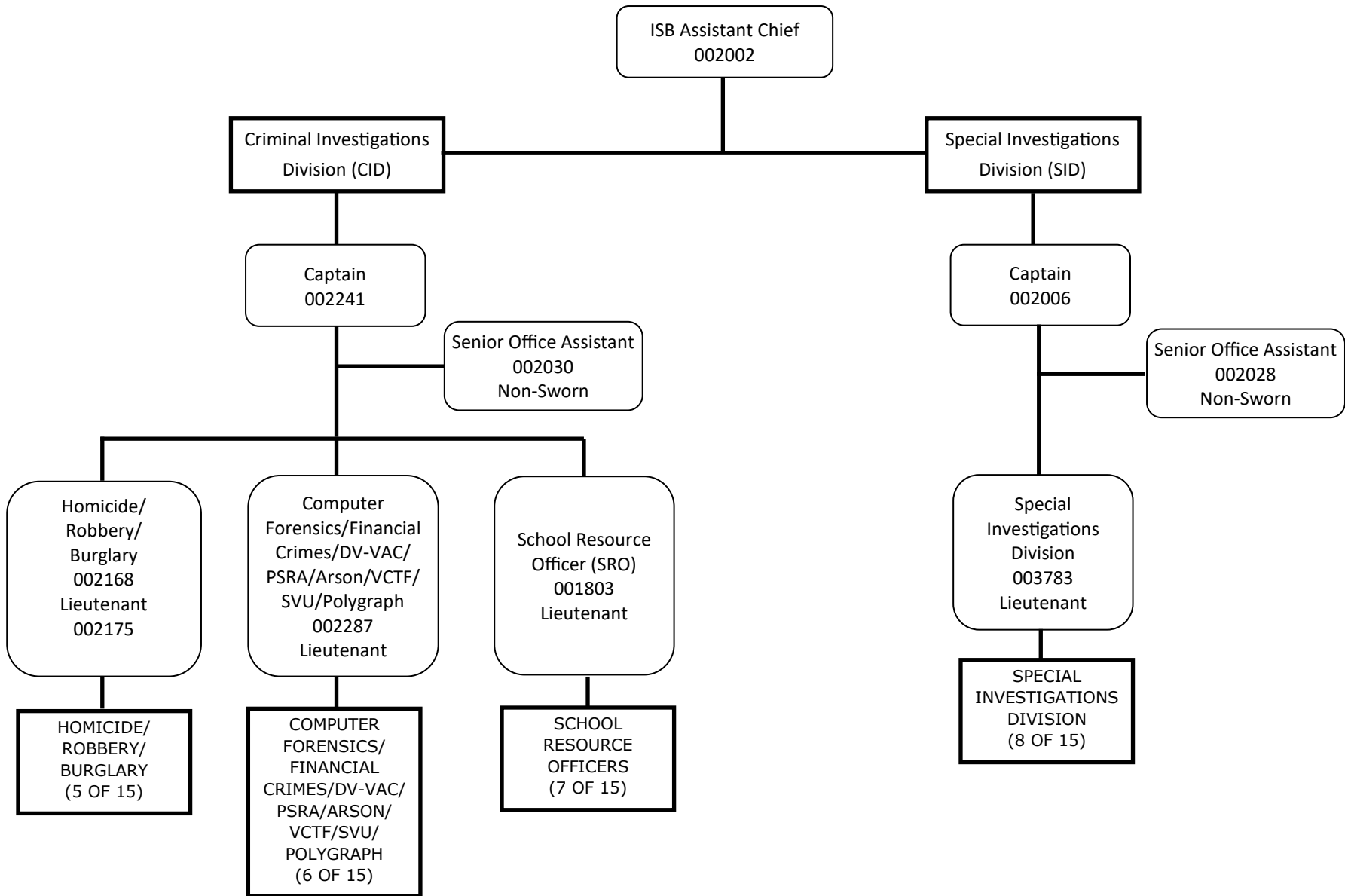


Note: This division is structured as squads (not illustrated).

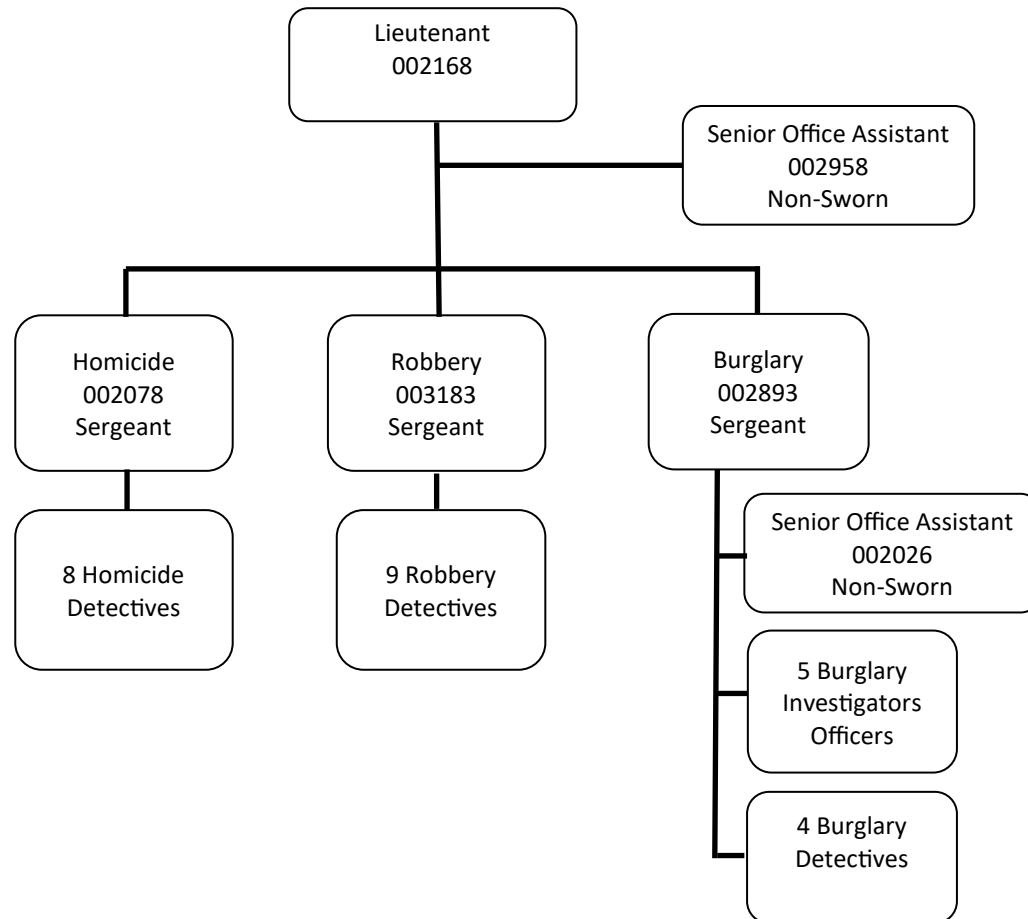
POLICE (3 of 15) - FIELD SERVICES BUREAU (FSB) - SPECIAL OPERATIONS



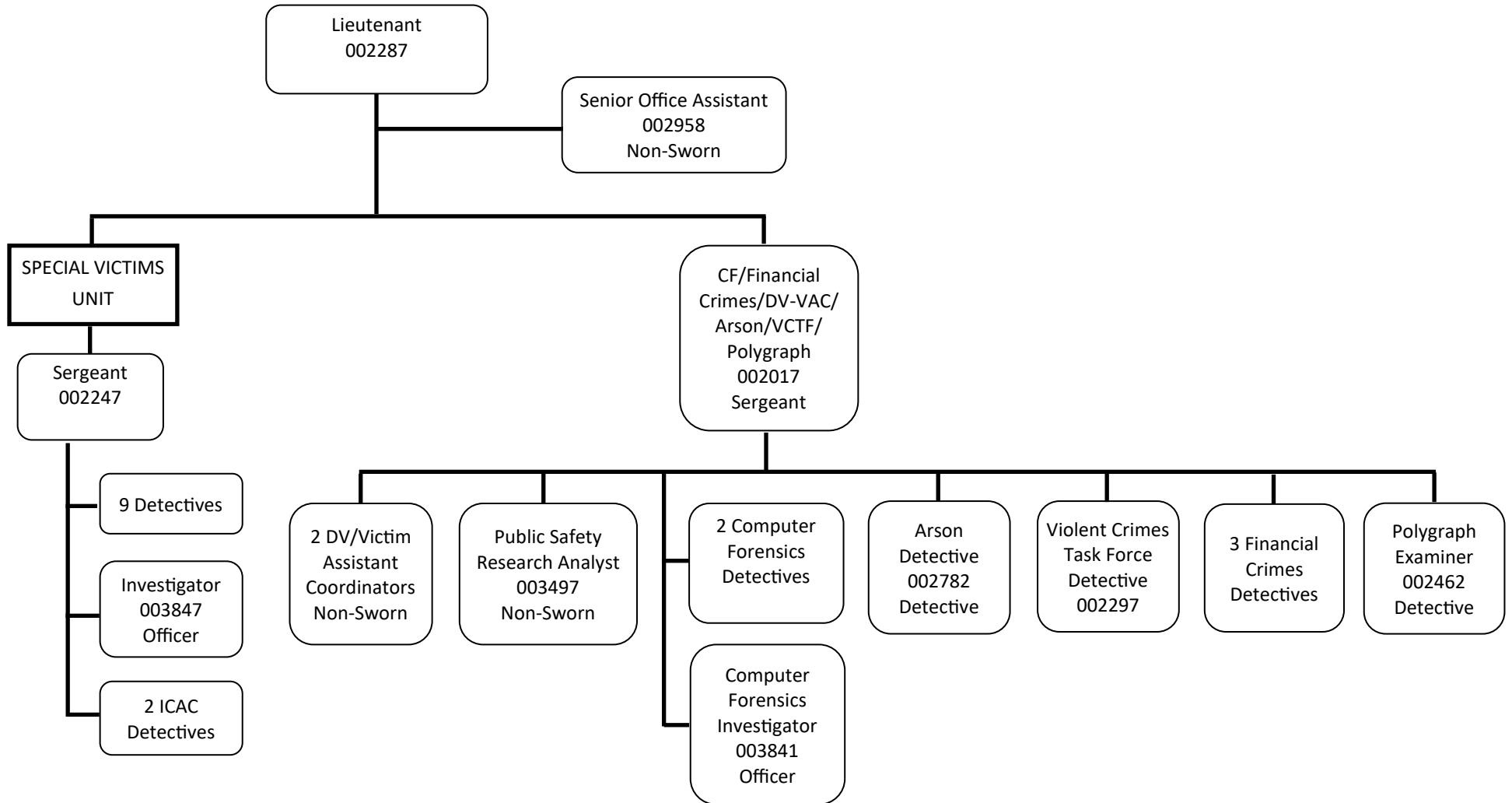
POLICE (4 of 15) - INVESTIGATIVE SERVICES BUREAU (ISB)



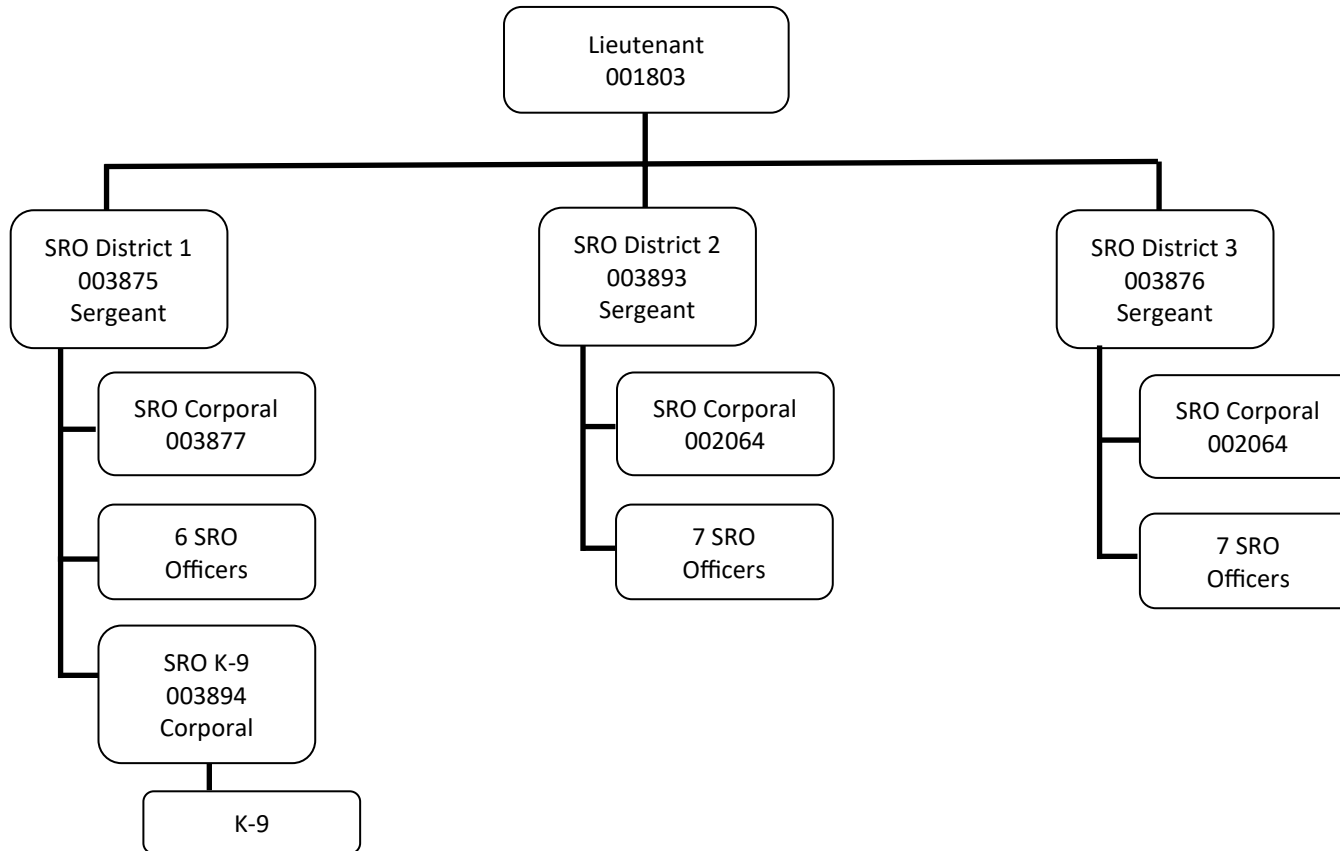
**POLICE (5 of 15) - INVESTIGATIVE SERVICES BUREAU (ISB) - CID -
HOMICIDE/ROBBERY/BURGLARY**



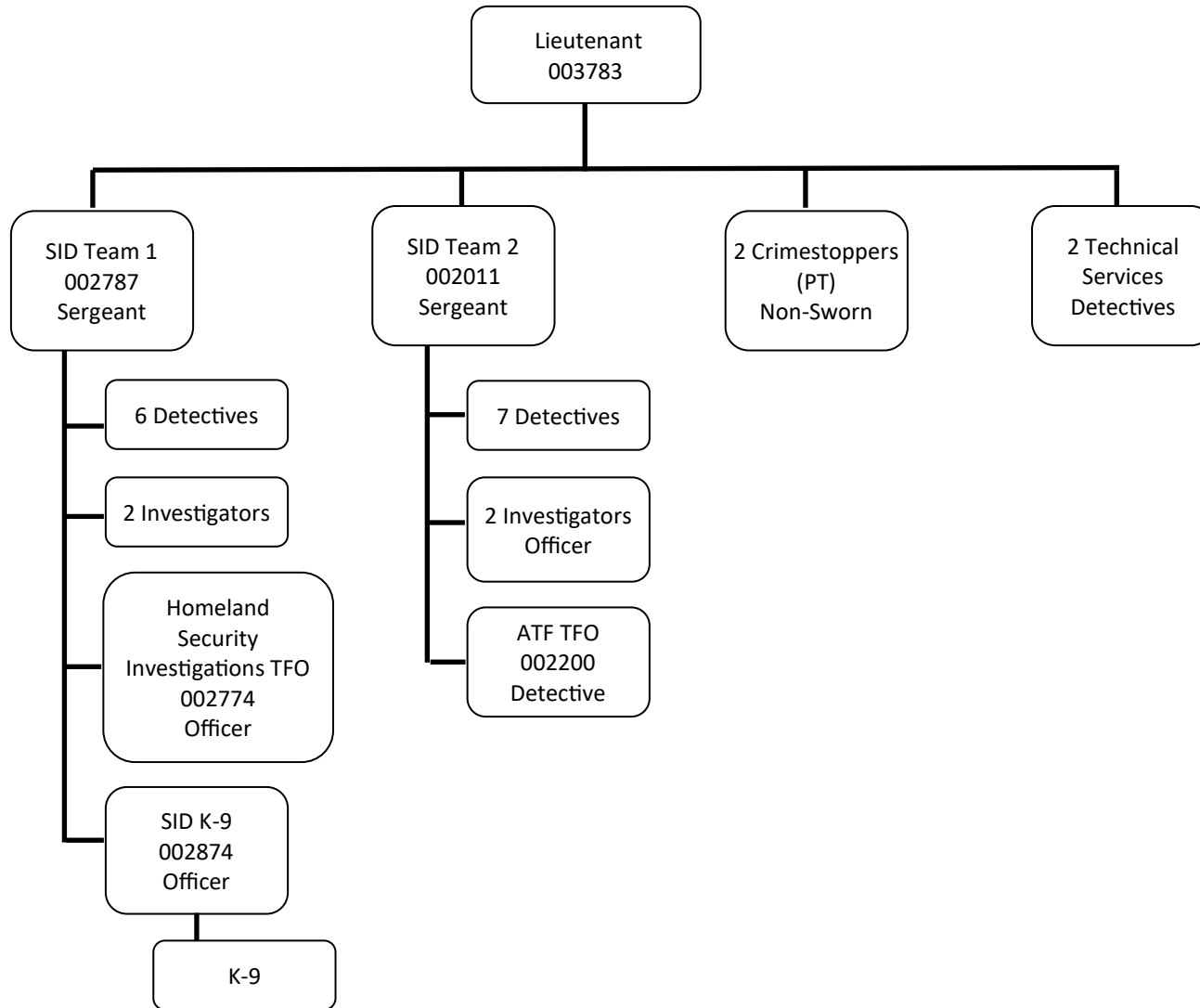
**POLICE (6 of 15) - INVESTIGATIVE SERVICES BUREAU (ISB) - CID -
COMPUTER FORENSICS/FINANCIAL CRIMES/DV-VAC/PSRA/ARSON/VCTF/SVU/POLYGRAPH**



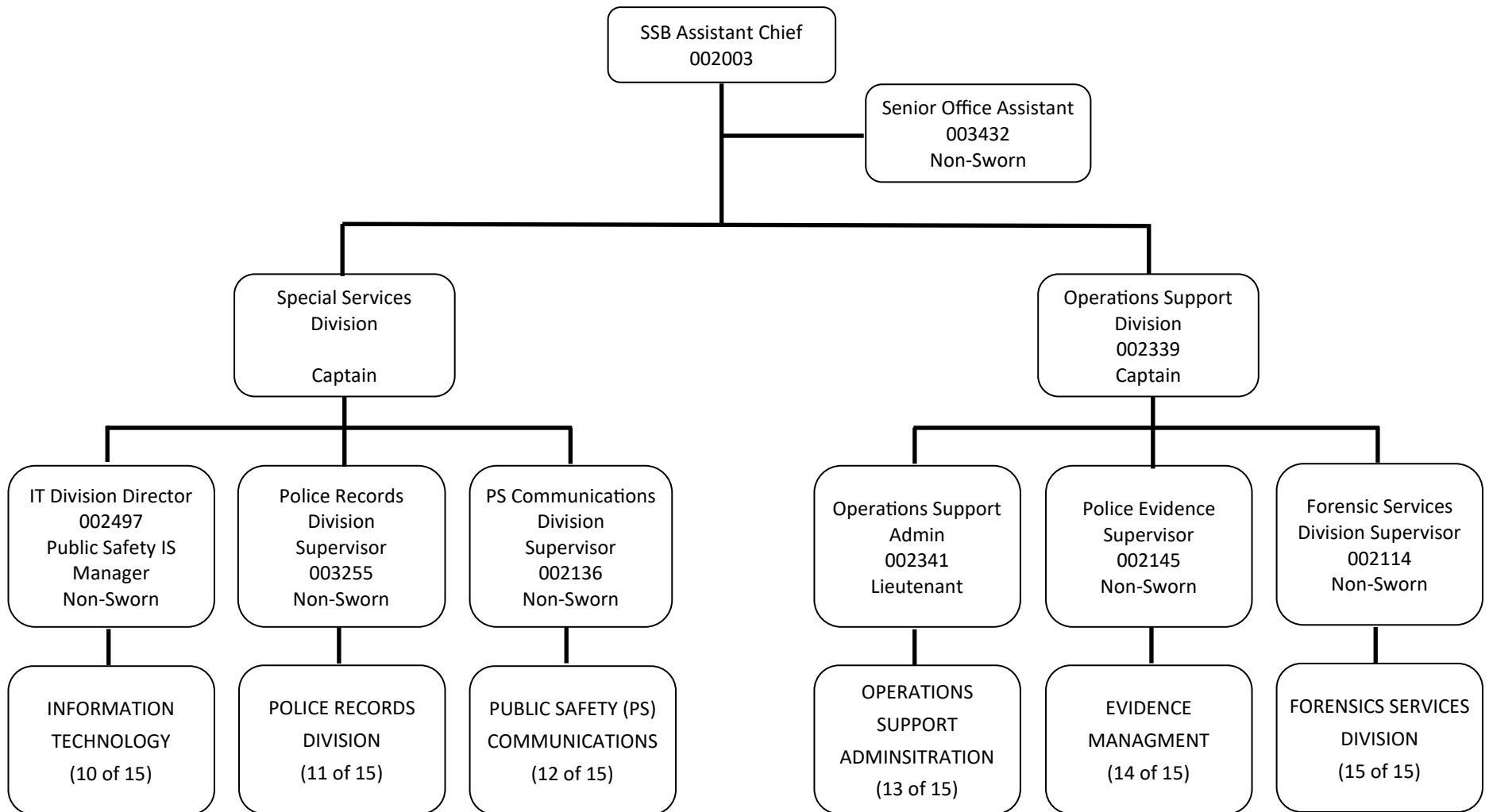
**POLICE (7 of 15) - INVESTIGATIVE SERVICES BUREAU (ISB) - CID -
SCHOOL RESOURCE OFFICER (SRO)**



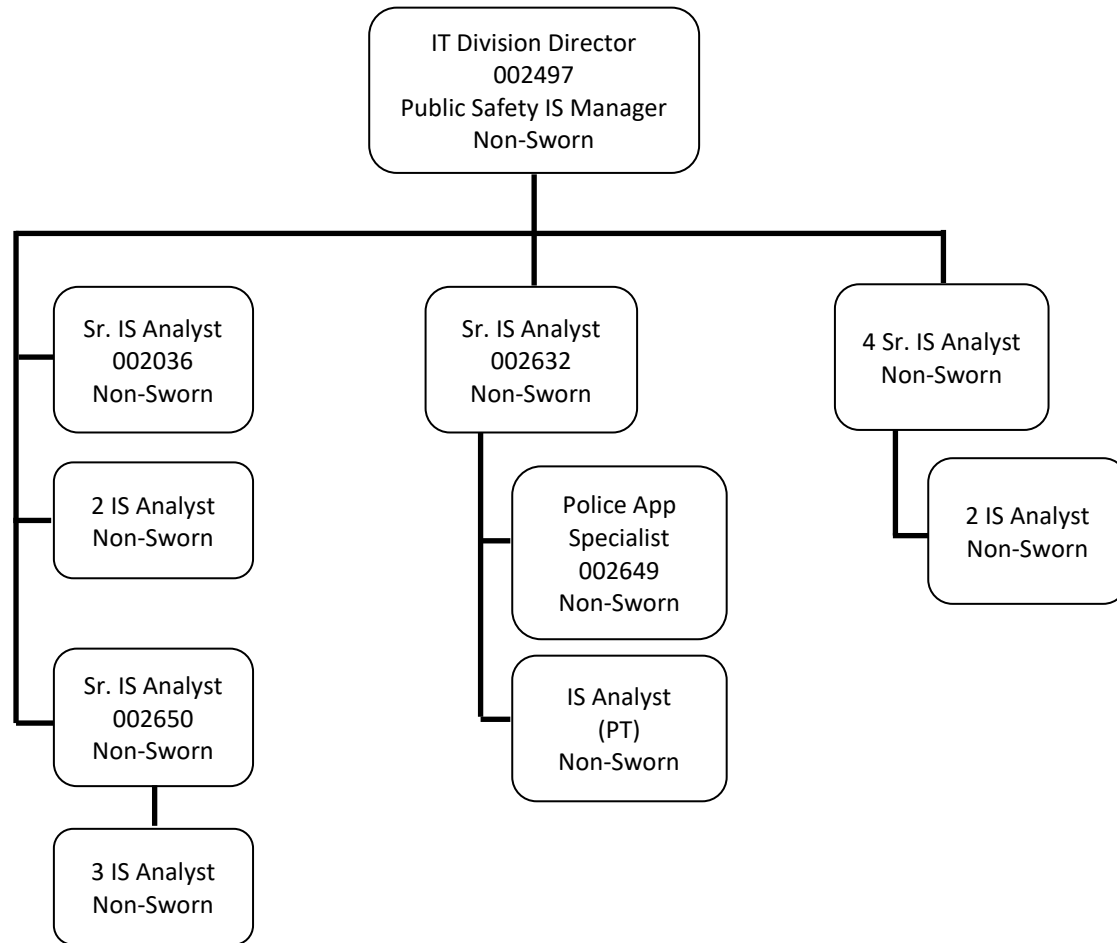
POLICE (8 of 15) - INVESTIGATIVE SERVICES BUREAU (ISB) - SPECIAL INVESTIGATIONS (SID)



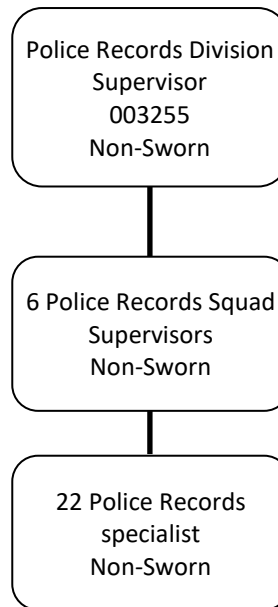
POLICE (9 of 15) - SUPPORT SERVICES BUREAU (SSB)



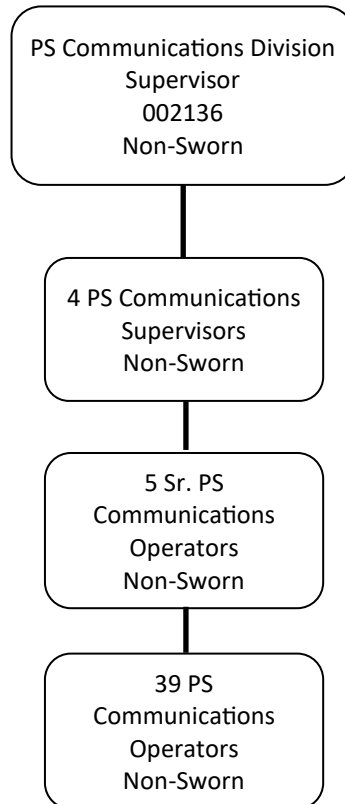
POLICE (10 of 15) - SUPPORT SERVICES BUREAU (SSB) - INFORMATION TECHNOLOGY



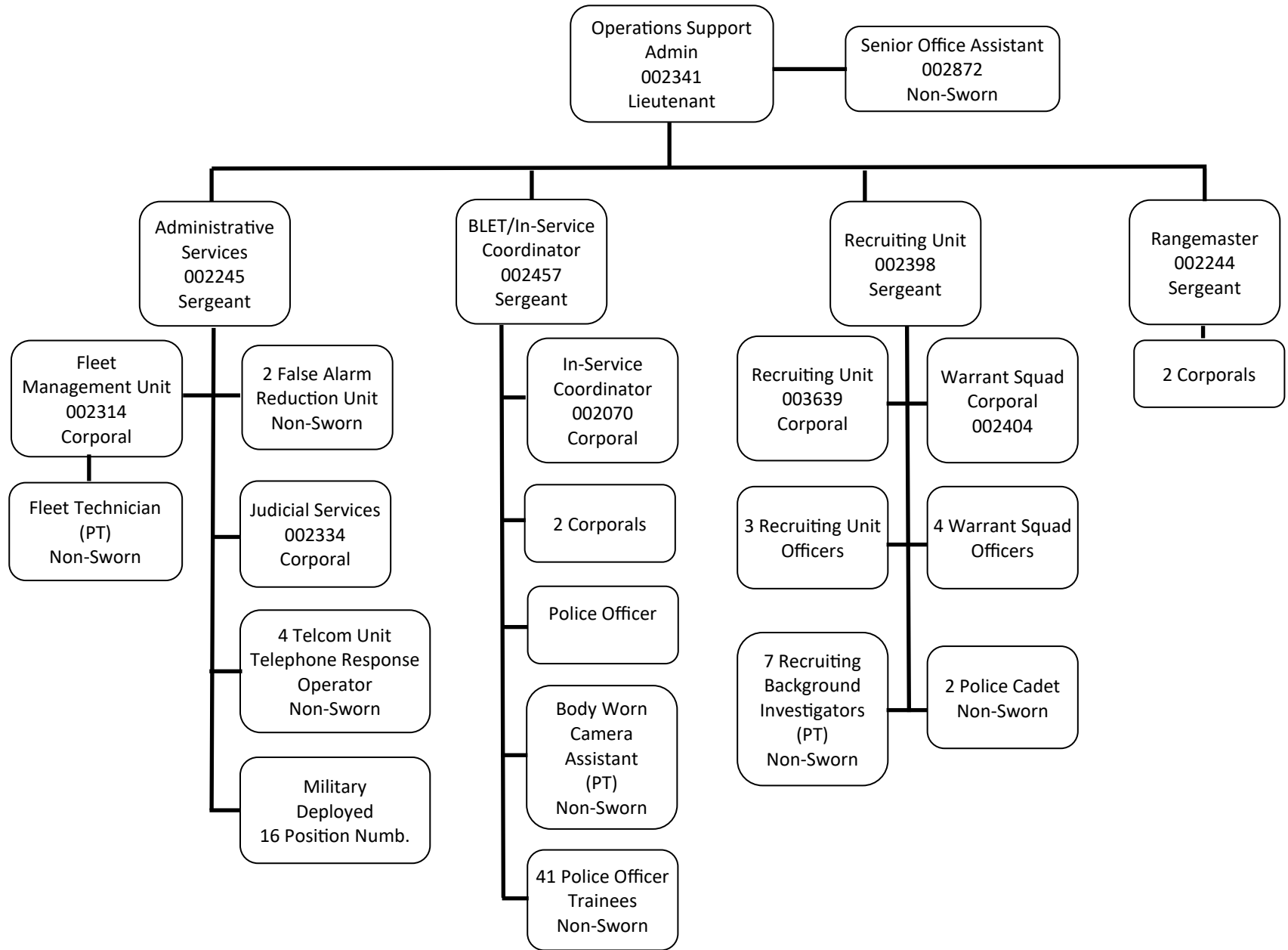
POLICE (11 of 15) - SUPPORT SERVICES BUREAU (SSB) - POLICE RECORDS



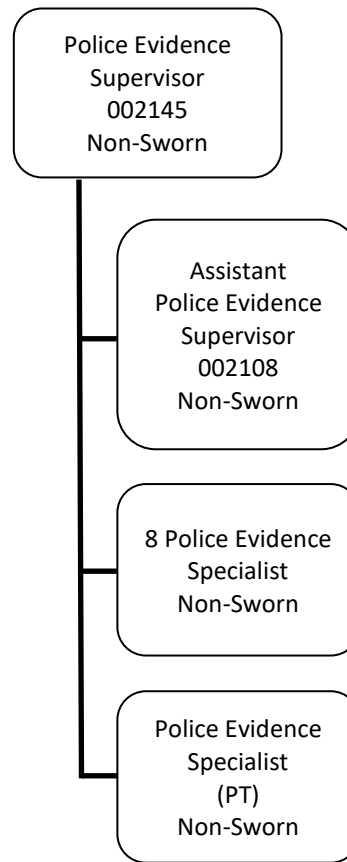
POLICE (12 of 15) - SUPPORT SERVICES BUREAU (SSB) - PUBLIC SAFETY COMMUNICATIONS (PS)



POLICE (13 of 15) - SUPPORT SERVICES BUREAU (SSB) - OPERATIONS SUPPORT ADMINISTRATION



POLICE (14 of 15) - SUPPORT SERVICES BUREAU (SSB) - EVIDENCE MANAGMENT



POLICE (15 of 15) - SUPPORT SERVICES BUREAU (SSB) - FORENSICS SERVICES

