

ALTERNATIVES FOR CORNER LOTS

MOST RESTRICTIVE



All four sides of the house are highly visible from public street.

- High visibility - Changes require major work
- Low visibility - Changes require minor work



Street facing sides and portions of other sides are highly visible. The remaining portions have low visibility.

LEAST RESTRICTIVE



Street facing sides - not including the rear - are highly visible. The other sides have low visibility.



Corner lot: front and side elevations



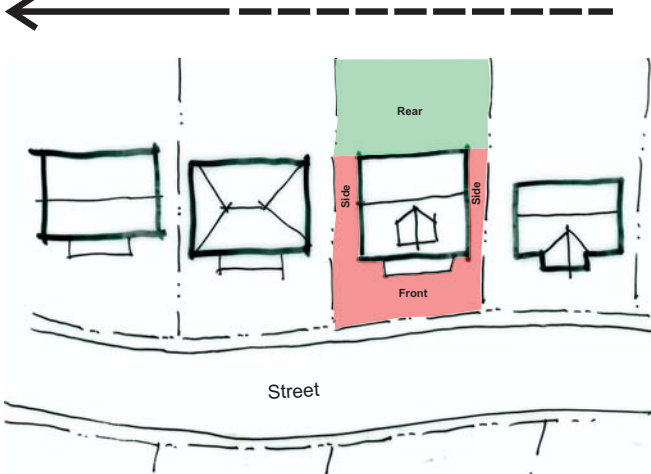
Corner lot: side elevation



Corner lot: back elevation

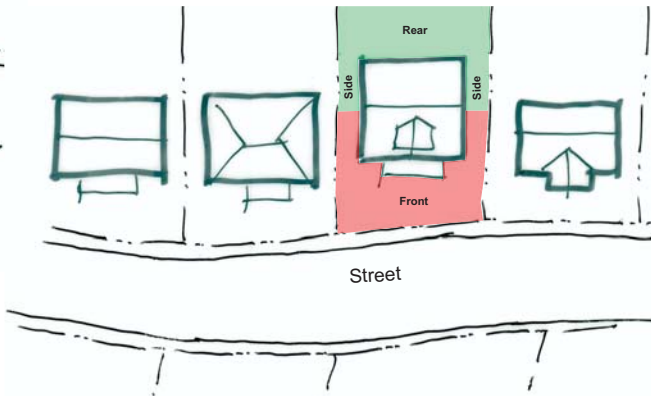
ALTERNATIVES FOR NARROW LOTS

MOST RESTRICTIVE



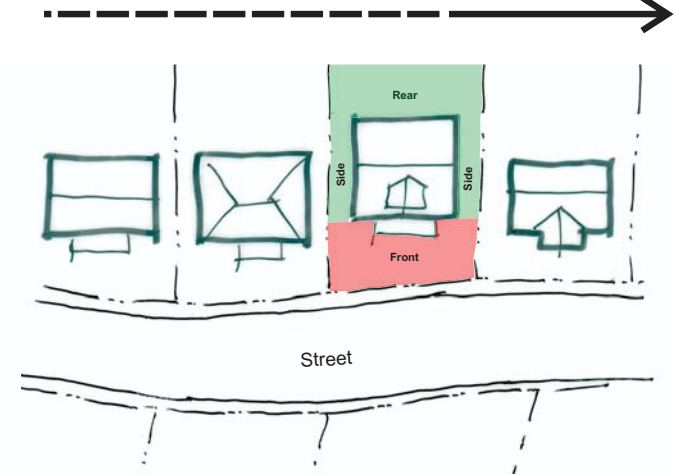
House on a narrow lot with three sides highly visible from public street and the rear with low visibility

- High visibility - Changes require major work
- Low visibility - Changes require minor work

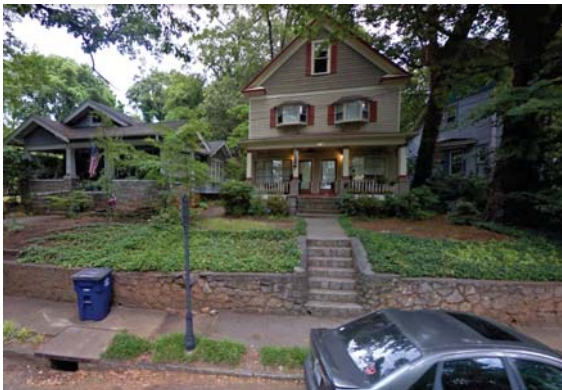


House on a narrow lot with the front, a portion of the sides highly visible. The remainder of the sides and the rear have low visibility.

LEAST RESTRICTIVE



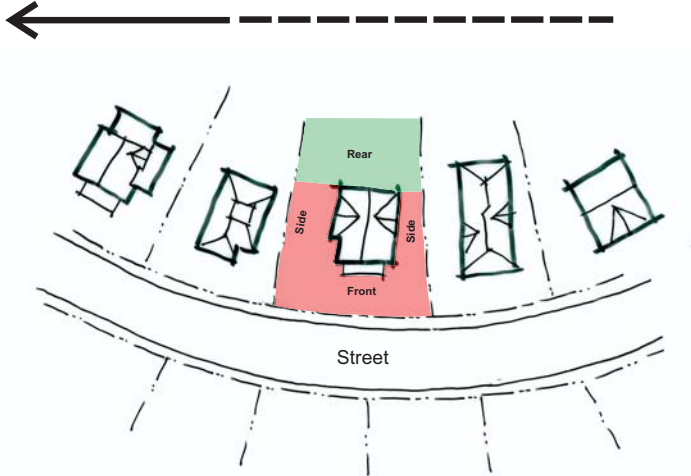
House on a narrow lot with front visible. The sides and rear have low visibility.



Examples of existing homes located on narrow lots.

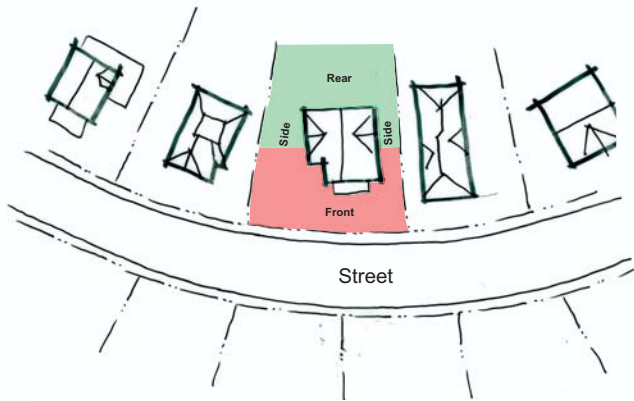
ALTERNATIVES FOR WIDER LOTS

MOST RESTRICTIVE



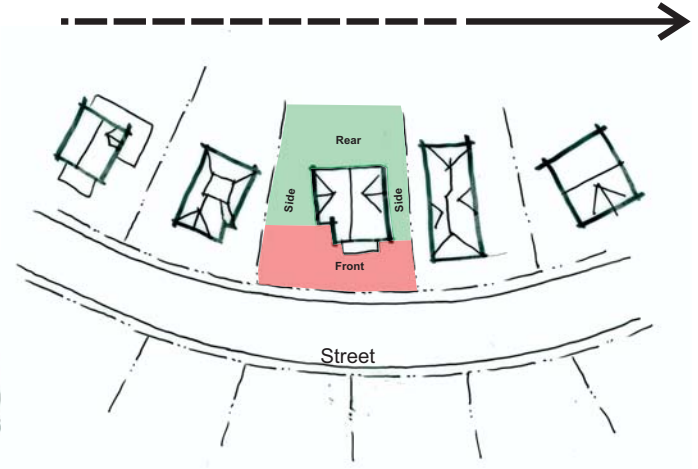
House on a wider lot with three sides highly visible from public street and the rear with low visibility

- High visibility - Changes require major work
- Low visibility - Changes require minor work



House on a wider lot with the front, a portion of each side highly visible. The rear of the sides and the rear have low visibility.

LEAST RESTRICTIVE



House on a wider lot with front highly visible. The sides and the rear have low visibility.



Examples of existing homes located on wider lots.