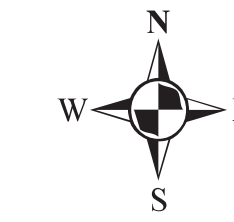
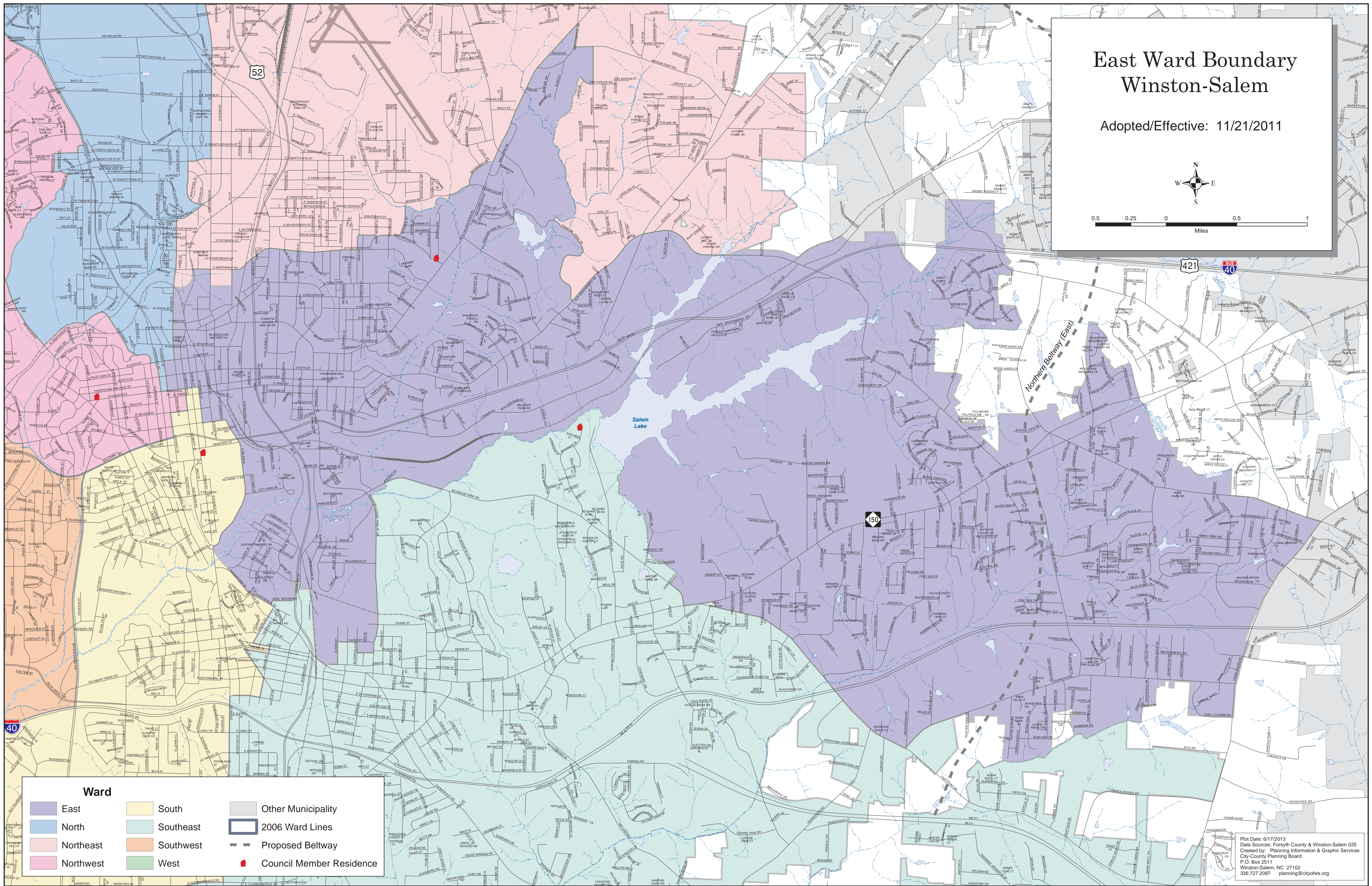


# East Ward Boundary Winston-Salem

Adopted/Effective: 11/21/2011



0.5 0.25 0 0.5 1  
Miles



Northern Beltway (Easy)

Salem Lake

150

Ward			
	East		Other Municipality
	North		2006 Ward Lines
	Northeast		Proposed Beltway
	Northwest		Council Member Residence
	South		
	Southeast		
	Southwest		
	West		

Plot Date: 6/17/2013  
 Data Sources: Forsyth County & Winston-Salem GIS  
 Created by: Planning Information & Graphic Services  
 City-County Planning Board  
 P.O. Box 2511  
 Winston-Salem, NC 27102  
 336.727.2087    planning@cityofws.org